



**Australian
Bureau of
Statistics**

**March
Quarter 1995**

**Tourist
Accommodation
Queensland**

Catalogue No. 8635.3



TOURIST ACCOMMODATION, QUEENSLAND, MARCH QUARTER 1995

MAIN FEATURES

MARCH QUARTER 1995
COMPARED WITH
MARCH QUARTER 1994

HOTELS, MOTELS AND GUEST HOUSES

- Rooms available increased by 2.3 per cent from 40,062 to 40,977 and bed spaces increased by 2.4 per cent to 124,706.
- Room nights occupied increased by 2.2 per cent from 2,140,797 to 2,188,428 overall, with licensed hotels recording an increase of 2.9 per cent and motels and guest houses an increase of 1.6 per cent.
- The room occupancy rate overall was unchanged at 59.4 per cent, with Gold Coast City, Cairns City and Brisbane City recording 75.0 per cent, 71.1 per cent and 70.1 per cent, respectively. For five star rated establishments, the room occupancy rate was 76.6 per cent compared with 66.8 per cent for four star rated establishments and 60.1 per cent for three star rated establishments.
- Guest nights increased by 0.4 per cent from 4,067,005 to 4,083,458 and the bed occupancy rate decreased from 37.2 per cent to 36.4 per cent.
- Guest arrivals decreased by 0.5 per cent from 1,677,147 to 1,669,357 while the average length of stay was unchanged at 2.4 days. Average length of stay ranged from 3.2 days for 5 star rated establishments to 1.8 days for 2 star establishments.
- Takings from accommodation increased by 7.0 per cent from \$190.6m to \$204.0m while average takings per room night occupied increased from \$89 to \$93.

HOLIDAY FLATS, UNITS AND HOUSES

- The number of units, etc. available for short-term letting increased by 9.2 per cent from 16,321 to 17,824 while unit nights occupied increased by 6.5 per cent from 862,883 to 918,795.
- The unit occupancy rate decreased from 58.8 per cent to 57.3 per cent.
- Unit lettings increased by 10.9 per cent from 134,177 to 148,765 while average length of stay decreased from 6.4 days to 6.2 days.
- Accommodation takings increased by 11.5 per cent from \$55.7m to \$62.1m and the average takings per unit night occupied increased from \$65 to \$68.

CARAVAN PARKS

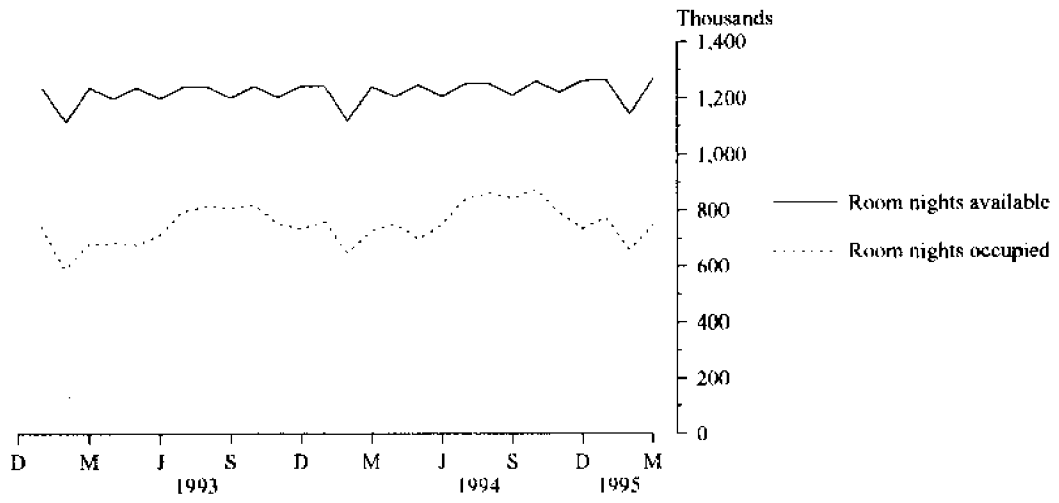
- Capacity available decreased by 1.1 per cent from 55,054 to 54,443 powered and unpowered sites and cabins, etc. while site nights occupied decreased by 2.6 per cent from 2,134,982 to 2,078,543.
- The site occupancy rate decreased from 43.1 per cent to 42.5 per cent.
- Long-term residents occupied 15,933 sites, etc. (29.3 per cent), while 1,252 sites (2.3 per cent) were permanently reserved but only casually occupied by their tenants and an average of 5,910 sites (10.9 per cent) were occupied by other short-term guests.
- Takings from accommodation rose by 2.1 per cent from \$21.9m to \$22.3m.

VISITOR HOSTELS

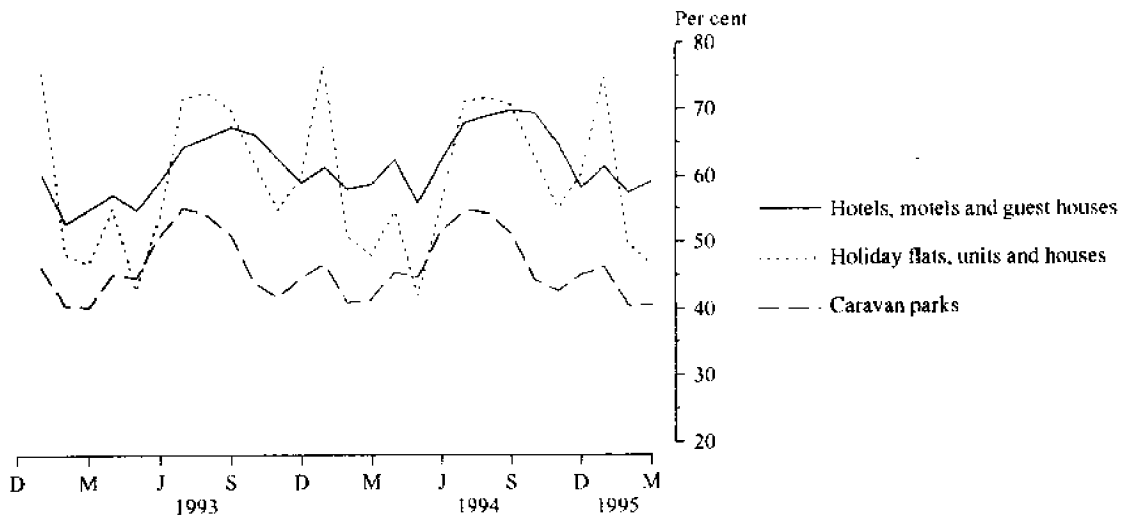
- Bed spaces available decreased by 4.3 per cent from 8,233 to 7,876 while guest nights sold decreased by 3.5 per cent from 339,321 to 327,541.
- The bed occupancy rate decreased from 46.3 per cent to 46.2 per cent.
- Guest arrivals decreased by 7.7 per cent from 135,787 to 125,331 while average length of stay increased from 2.5 days to 2.6 days.
- Accommodation takings increased by 4.5 per cent from \$3.9m to \$4.0m with average takings per guest night increasing from \$11 to \$12.

- INQUIRIES
- *for further information about statistics in this publication and the availability of related unpublished statistics, contact Greg McNamara on 008 077285 or any ABS office.*
 - *for information about other ABS statistics and services, refer to the back page of this publication.*

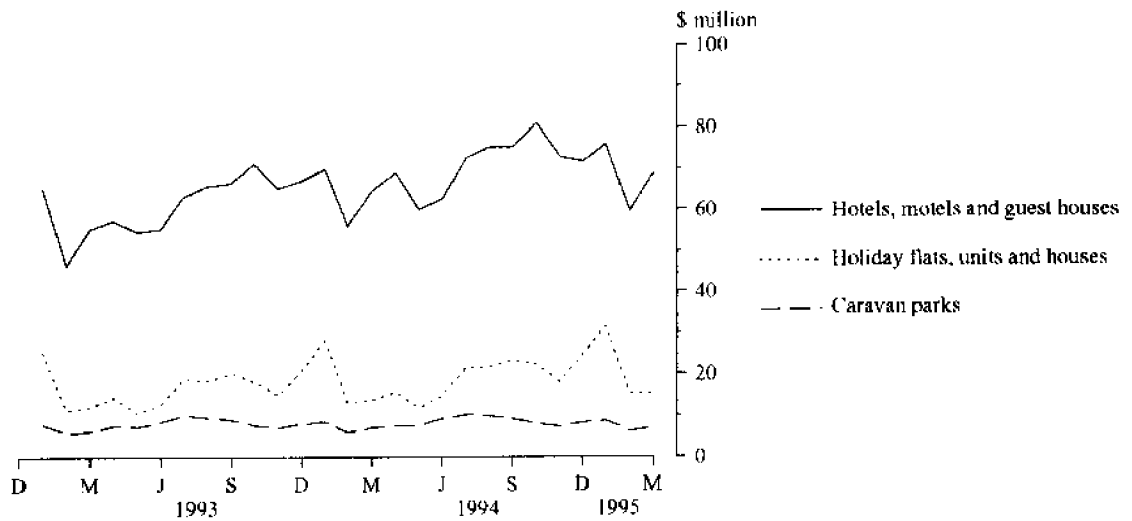
**MONTHLY ROOM NIGHTS AVAILABLE AND OCCUPIED:
HOTELS, MOTELS AND GUEST HOUSES,
QUEENSLAND**



**MONTHLY OCCUPANCY RATES,
QUEENSLAND**



**MONTHLY TAKINGS FROM ACCOMMODATION,
QUEENSLAND**



CONTENTS

<i>Table</i>		<i>Page</i>
-	Main features	1
-	Diagrams	2
1	Summary of hotels, motels and guest houses with facilities, Queensland	4
2	Summary of caravan parks, Queensland	5
3	Summary of holiday flats, units and houses, Queensland	6
4	Summary of visitor hostels, Queensland	6
5	Hotels, motels and guest houses with facilities by star grading, Queensland	7
6	Hotels, motels and guest houses with facilities by statistical division, Queensland	8
7	Hotels, motels and guest houses with facilities: Statistical divisions and selected subdivisions and statistical local areas, Queensland	12
8	Holiday flats, units and houses by statistical division, Queensland	16
9	Holiday flats, units and houses: Statistical divisions and selected subdivisions and statistical local areas, Queensland	18
10	Caravan parks by statistical division, Queensland	20
11	Caravan parks: Statistical divisions and selected subdivisions and statistical local areas, Queensland	24
12	Visitor hostels by statistical division, Queensland	28
-	Explanatory Notes	29
-	Time series statistics available	33
-	Reference maps statistical divisions and local government areas of Queensland	35

TABLE 1 — SUMMARY OF HOTELS, MOTELS AND GUEST HOUSES WITH FACILITIES, QUEENSLAND (a)

Particulars	Unit	Quarter ended				Year ended			
		December 1993	March 1994	June 1994	September 1994	December 1994	March 1995	March 1994	March 1995
LICENSED HOTELS WITH FACILITIES									
Establishments	No.	262	258	265	264	263	266
Guest rooms	No.	17,917	17,914	18,028	18,194	18,207	18,425
Bed spaces	No.	53,013	53,344	53,940	54,602	54,952	54,986
Employment (persons)	No.	21,104	20,456	20,409	21,133	21,835	21,260
Room nights occupied	No.	1,122,871	1,028,503	1,016,954	1,165,651	1,164,730	1,058,048	4,159,401	4,405,383
Room occupancy rate	per cent	68.1	63.8	62.0	69.9	69.5	63.9	63.6	66.4
Guest nights	No.	2,086,779	1,943,909	1,869,013	2,204,653	2,166,646	1,983,878	7,695,343	8,224,190
Bed occupancy rate	per cent	42.8	40.5	38.1	44.0	42.9	40.1	39.6	41.3
Guest arrivals	No.	730,049	686,634	664,482	770,122	749,433	684,436	2,647,880	2,868,473
Average length of stay	days	2.9	2.8	2.8	2.9	2.9	2.9	2.9	2.9
Takings from accommodation	\$'000	129,142	119,446	117,679	134,644	144,092	129,401	462,392	525,816
MOTELS AND GUEST HOUSES WITH FACILITIES									
Establishments	No.	836	835	836	831	838	840
Guest rooms	No.	22,208	22,148	22,183	22,188	22,553	22,552
Bed spaces	No.	68,551	68,414	68,533	68,284	69,679	69,720
Employment (persons)	No.	8,417	8,310	8,431	8,749	8,758	8,469
Room nights occupied	No.	1,187,846	1,112,294	1,184,899	1,389,799	1,240,707	1,130,380	4,787,400	4,945,785
Room occupancy rate	per cent	58.2	55.9	58.7	68.1	59.9	55.8	59.4	60.6
Guest nights	No.	2,231,183	2,123,096	2,180,046	2,615,715	2,317,400	2,099,580	9,014,296	9,212,741
Bed occupancy rate	per cent	35.4	34.5	35.0	41.6	36.2	33.5	36.2	36.6
Guest arrivals	No.	1,066,888	990,513	1,068,182	1,270,482	1,120,996	984,921	4,333,893	4,444,581
Average length of stay	days	2.1	2.1	2.0	2.1	2.1	2.1	2.1	2.1
Takings from accommodation	\$'000	74,229	71,158	72,797	87,914	81,240	74,635	294,413	316,587
TOTAL HOTELS, MOTELS AND GUEST HOUSES WITH FACILITIES									
Establishments	No.	1,098	1,093	1,101	1,095	1,101	1,106
Guest rooms	No.	40,125	40,062	40,211	40,382	40,760	40,977
Bed spaces	No.	121,564	121,758	122,473	122,886	124,631	124,706
Employment (persons)	No.	29,521	28,766	28,840	29,882	30,593	29,729
Room nights occupied	No.	2,310,717	2,140,797	2,201,853	2,555,450	2,405,437	2,188,428	8,946,801	9,351,168
Room occupancy rate	per cent	62.6	59.4	60.2	68.9	64.2	59.4	61.3	63.2
Guest nights	No.	4,317,962	4,067,005	4,049,059	4,820,368	4,484,046	4,083,458	16,709,639	17,436,931
Bed occupancy rate	per cent	38.6	37.2	36.3	42.7	39.1	36.4	37.7	38.7
Guest arrivals	No.	1,796,937	1,677,147	1,732,664	2,040,604	1,870,429	1,669,357	6,981,773	7,313,054
Average length of stay	days	2.4	2.4	2.3	2.4	2.4	2.4	2.4	2.4
Takings from accommodation	\$'000	203,370	190,605	190,476	222,559	225,332	204,036	756,805	842,402

(a) From December quarter 1993, establishments with fewer than 5 rooms have been formally excluded from the scope of this collection. See Explanatory Note 2 (page 29).

TABLE 2 — SUMMARY OF CARAVAN PARKS, QUEENSLAND

Particulars	Unit	Quarter ended				Year ended			
		December 1993	March 1994	June 1994	September 1994	December 1994	March 1995	March 1994	March 1995
SHORT-TERM CARAVAN PARKS									
Establishments	No.	231	232	238	239	238	238
Capacity									
On-site vans	No.	1,080	1,062	1,065	1,053	1,058	1,041
Other powered sites	No.	10,792	10,831	11,040	10,738	10,798	10,823
Unpowered sites	No.	8,390	8,261	8,268	7,895	7,936	7,785
Cabins, etc.	No.	1,207	1,243	1,266	1,303	1,313	1,322
<i>Total capacity</i>	<i>No.</i>	<i>21,469</i>	<i>21,397</i>	<i>21,639</i>	<i>20,989</i>	<i>21,105</i>	<i>20,971</i>
Sites occupied by long-term guests	No.	1,752	1,769	1,821	1,812	1,744	1,742
Other sites permanently reserved	No.	684	675	755	850	723	728
Employment (persons)	No.	811	806	866	896	888	863
Site nights occupied	No.	565,353	527,427	664,321	878,827	576,180	526,087	2,597,665	2,645,415
Site occupancy rate	per cent	28.7	27.5	33.9	45.6	29.7	27.9	33.4	34.3
Takings from accommodation	\$'000	6,953	6,285	7,971	11,012	7,221	6,666	31,018	32,870
LONG-TERM CARAVAN PARKS									
Establishments	No.	398	397	393	393	393	391
Capacity									
On-site vans	No.	4,728	4,763	4,775	4,745	4,704	4,740
Other powered sites	No.	21,835	21,424	21,305	21,436	21,644	21,363
Unpowered sites	No.	5,413	5,162	5,109	5,040	4,975	4,930
Cabins, etc.	No.	2,237	2,308	2,331	2,359	2,404	2,439
<i>Total capacity</i>	<i>No.</i>	<i>34,213</i>	<i>33,657</i>	<i>33,520</i>	<i>33,580</i>	<i>33,727</i>	<i>33,472</i>
Sites occupied by long-term guests	No.	14,687	14,659	14,923	14,886	14,382	14,191
Other sites permanently reserved	No.	502	497	456	513	480	524
Employment (persons)	No.	1,372	1,458	1,380	1,373	1,368	1,417
Site nights occupied	No.	1,659,131	1,607,555	1,704,073	1,807,303	1,646,586	1,552,456	6,867,544	6,710,418
Site occupancy rate	per cent	52.7	53.1	55.9	58.5	53.1	51.7	55.1	54.8
Takings from accommodation	\$'000	15,979	15,594	16,655	18,393	16,504	15,665	66,026	67,216
TOTAL CARAVAN PARKS									
Establishments	No.	629	629	631	632	631	629
Capacity									
On-site vans	No.	5,808	5,825	5,840	5,798	5,762	5,781
Other powered sites	No.	32,627	32,255	32,345	32,174	32,442	32,186
Unpowered sites	No.	13,803	13,423	13,377	12,935	12,911	12,715
Cabins, etc.	No.	3,444	3,551	3,597	3,662	3,717	3,761
<i>Total capacity</i>	<i>No.</i>	<i>55,682</i>	<i>55,054</i>	<i>55,159</i>	<i>54,569</i>	<i>54,832</i>	<i>54,443</i>
Sites occupied by long-term guests	No.	16,439	16,428	16,744	16,698	16,126	15,933
Other sites permanently reserved	No.	1,186	1,172	1,211	1,363	1,203	1,252
Employment (persons)	No.	2,183	2,264	2,246	2,269	2,256	2,280
Site nights occupied	No.	2,224,484	2,134,982	2,368,394	2,686,130	2,222,766	2,078,543	9,465,209	9,355,833
Site occupancy rate	per cent	43.4	43.1	47.3	53.5	44.1	42.5	46.8	46.9
Takings from accommodation	\$'000	22,931	21,878	24,626	29,404	23,725	22,331	97,044	100,086

TABLE 3 — SUMMARY OF HOLIDAY FLATS, UNITS AND HOUSES, QUEENSLAND

Particulars	Unit	Quarter ended				Year ended			
		December 1993	March 1994	June 1994	September 1994	December 1994	March 1995	March 1994	March 1995
Letting entities	No.	611	605	619	632	651	641
Flats, units and houses									
Single bedroom	No.	3,512	3,497	3,423	3,560	3,561	3,595
Multiple bedroom	No.	13,096	12,824	13,249	13,865	14,469	14,229
Total flats, units and houses	No.	16,608	16,321	16,672	17,425	18,030	17,824
Bed spaces	No.	66,574	65,990	67,723	70,544	73,510	72,628
Employment (persons) (a)	No.	2,160	2,125	2,185	2,325	2,435	2,384
Unit nights occupied	No.	901,951	862,883	767,957	1,137,951	985,128	918,795	3,554,126	3,809,831
Unit occupancy rate	per cent	59.1	58.8	50.7	71.2	59.5	57.3	60.0	59.8
Unit lettings	No.	147,452	134,177	127,802	163,216	167,280	148,765	548,671	607,063
Average length of stay	days	6.1	6.4	6.0	7.0	5.9	6.2	6.5	6.3
Takings from accommodation	\$'000	54,078	55,714	42,801	66,634	65,020	62,127	205,525	236,583

(a) Employment numbers exclude real estate agents and their employees.

TABLE 4 — SUMMARY OF VISITOR HOSTELS, QUEENSLAND

Particulars	Unit	Quarter ended				Year ended			
		December 1993	March 1994	June 1994	September 1994	December 1994	March 1995	March 1994	March 1995
Establishments	No.	118	122	116	116	118	114
Bed spaces	No.	7,863	8,233	7,822	7,791	7,978	7,876
Employment (persons)	No.	543	550	543	554	585	588
Guest nights	No.	339,234	339,321	341,404	380,506	352,680	327,541	1,407,890	1,402,131
Bed occupancy rate	per cent	47.1	46.3	48.0	53.1	48.1	46.2	49.0	48.8
Guest arrivals	No.	124,599	135,787	125,871	138,586	126,929	125,331	540,048	516,717
Average length of stay	days	2.7	2.5	2.7	2.7	2.8	2.6	2.6	2.7
Takings from accommodation	\$'000	3,782	3,871	3,866	4,554	4,352	4,044	15,982	16,816

TABLE 5 — HOTELS, MOTELS AND GUEST HOUSES WITH FACILITIES BY STAR GRADING, QUEENSLAND

Particulars	Star grading						Total
	1	2	3	4	5	Ungraded	
ESTABLISHMENTS, CAPACITY AND EMPLOYMENT							
<i>March quarter 1994—</i>							
Establishments	17	455	404	54	18	145	1,093
Guest rooms	277	8,547	15,328	7,829	5,533	2,548	40,062
Bed spaces	809	25,766	46,893	24,665	16,188	7,437	121,758
Employment (persons)	126	3,739	7,910	6,078	9,097	1,816	28,766
<i>March quarter 1995—</i>							
Establishments	15	417	420	55	15	184	1,106
Guest rooms	228	7,546	15,958	8,339	4,350	4,556	40,977
Bed spaces	573	22,783	48,878	27,003	12,642	12,827	124,706
Employment (persons)	99	3,322	8,346	8,757	6,068	3,137	29,729
ROOM NIGHTS OCCUPIED							
<i>March quarter 1994</i>	8,559	364,021	814,028	468,461	380,396	105,332	2,140,797
<i>1995</i>							
January	3,022	118,722	304,663	176,683	101,142	74,653	778,885
February	2,284	92,985	257,663	152,708	95,605	57,706	658,977
March	2,228	106,935	300,281	170,687	103,325	67,136	750,592
<i>March quarter 1995</i>	7,534	318,642	862,607	500,078	300,072	199,495	2,188,428
ROOM OCCUPANCY RATES (per cent)							
<i>March quarter 1994</i>	34.3	47.5	59.0	66.5	76.4	46.0	59.4
<i>1995</i>							
January	42.8	50.8	61.6	68.6	75.0	53.1	61.4
February	35.8	44.1	57.7	65.6	78.5	45.4	57.5
March	35.8	45.8	60.7	66.0	76.6	47.6	59.2
<i>March quarter 1995</i>	38.3	47.0	60.1	66.8	76.6	48.8	59.4
GUEST NIGHTS							
<i>March quarter 1994</i>	14,506	670,733	1,559,052	933,629	684,532	204,553	4,067,005
<i>1995</i>							
January	5,154	238,924	640,895	373,586	199,532	152,708	1,610,799
February	3,424	158,342	449,532	270,543	174,082	106,933	1,162,856
March	3,665	180,387	522,837	306,213	177,031	119,670	1,309,803
<i>March quarter 1995</i>	12,243	577,653	1,613,264	950,342	550,645	379,311	4,083,458
BED OCCUPANCY RATES (per cent)							
<i>March quarter 1994</i>	19.9	29.0	36.9	42.1	47.0	30.6	37.2
<i>1995—</i>							
January	29.0	33.8	42.3	44.8	50.9	38.5	41.7
February	21.3	24.9	32.9	35.9	49.2	29.8	33.3
March	22.4	25.6	34.5	36.6	45.2	30.1	33.9
<i>March quarter 1995</i>	24.4	28.2	36.7	39.2	48.4	32.9	36.4
GUEST ARRIVALS							
<i>March quarter 1994</i>	6,884	371,461	661,144	354,209	218,603	64,846	1,677,147
<i>1995—</i>							
January	2,183	125,233	260,695	121,533	55,841	49,928	615,413
February	1,461	88,240	203,593	107,983	56,686	38,576	496,539
March	1,342	99,898	229,905	120,366	60,719	45,175	557,405
<i>March quarter 1995</i>	4,986	313,371	694,193	349,882	173,246	133,679	1,669,357
AVERAGE LENGTH OF STAY (days)							
<i>March quarter 1994</i>	2.1	1.8	2.4	2.6	3.1	3.2	2.4
<i>March quarter 1995</i>	2.5	1.8	2.3	2.7	3.2	2.8	2.4
TAKINGS FROM ACCOMMODATION (\$'000)							
<i>March quarter 1994</i>	514	16,734	59,763	47,698	59,291	6,604	190,605
<i>1995</i>							
January	139	6,292	24,182	20,659	18,295	6,235	75,803
February	86	4,379	18,565	16,568	15,567	4,468	59,632
March	77	5,069	21,901	18,747	17,643	5,163	68,601
<i>March quarter 1995</i>	302	15,741	64,648	55,974	51,505	15,866	204,036

TABLE 6—HOTELS, MOTELS AND GUEST HOUSES WITH FACILITIES BY STATISTICAL DIVISION,
QUEENSLAND

Particulars	Brisbane (SD)			Moreton (SD)			Wide Bay-Burnett (SD)		
	Licensed hotels	Motels, etc.	Total	Licensed hotels	Motels, etc.	Total	Licensed hotels	Motels, etc.	Total
ESTABLISHMENTS, CAPACITY AND EMPLOYMENT									
<i>March quarter 1994</i>									
Establishments	36	96	132	40	211	251	19	103	122
Guest rooms	2,439	3,710	6,149	5,803	5,184	10,987	535	1,838	2,373
Bed spaces	6,232	10,886	17,118	18,017	16,104	34,121	1,690	5,833	7,523
Employment (persons)	3,361	1,751	5,112	8,370	1,854	10,224	440	588	1,028
<i>March quarter 1995</i>									
Establishments	37	97	134	39	203	242	20	104	124
Guest rooms	2,448	3,834	6,282	5,962	5,108	11,070	572	1,856	2,428
Bed spaces	6,490	11,304	17,794	18,310	16,249	34,559	1,839	5,888	7,727
Employment (persons)	3,365	1,831	5,196	8,615	1,802	10,417	485	607	1,092
ROOM NIGHTS OCCUPIED									
<i>March quarter 1994</i>	156,717	220,436	377,153	388,430	277,255	665,685	19,357	78,908	98,265
<i>1995—</i>									
January	47,327	74,240	121,567	143,088	109,324	252,412	8,712	30,265	38,977
February	53,339	71,517	124,856	120,989	75,175	196,164	5,787	22,685	28,472
March	58,534	82,896	141,430	129,625	83,602	213,227	7,616	27,570	35,186
<i>March quarter 1995</i>	159,200	228,653	387,853	393,702	268,101	661,803	22,115	80,520	102,635
ROOM OCCUPANCY RATES (per cent)									
<i>March quarter 1994</i>	71.4	66.6	68.5	74.4	59.5	67.3	40.2	47.7	46.0
<i>1995—</i>									
January	62.4	62.9	62.7	77.4	69.2	73.6	49.1	52.8	51.9
February	77.8	67.0	71.2	72.5	52.6	63.3	36.1	44.0	42.1
March	78.0	69.7	72.9	70.1	52.8	62.1	43.0	48.1	46.9
<i>March quarter 1995</i>	72.5	66.5	68.9	73.4	58.4	66.5	43.0	48.4	47.1
GUEST NIGHTS									
<i>March quarter 1994</i>	230,872	386,571	617,443	767,075	629,564	1,396,639	45,599	143,926	189,525
<i>1995—</i>									
January	73,343	143,521	216,864	312,964	262,816	575,780	21,936	61,358	83,294
February	71,958	115,446	187,404	242,504	155,696	398,200	11,767	37,154	48,921
March	78,606	130,423	209,029	247,516	168,104	415,620	15,374	44,732	60,106
<i>March quarter 1995</i>	223,907	389,390	613,297	802,984	586,616	1,389,600	49,077	143,244	192,321
BED OCCUPANCY RATES (per cent)									
<i>March quarter 1994</i>	41.2	39.8	40.3	47.3	43.5	45.5	30.0	27.4	28.0
<i>1995—</i>									
January	36.5	41.3	39.5	55.1	52.3	53.8	38.5	33.7	34.8
February	39.6	36.7	37.8	47.3	34.2	41.2	22.9	22.7	22.8
March	39.3	37.2	38.0	43.6	33.4	38.8	27.0	24.7	25.2
<i>March quarter 1995</i>	38.4	38.5	38.4	48.7	40.1	44.7	29.7	27.2	27.8
GUEST ARRIVALS									
<i>March quarter 1994</i>	122,634	167,231	289,865	241,684	239,701	481,385	20,173	94,848	115,021
<i>1995—</i>									
January	42,165	64,001	106,166	81,055	88,227	169,282	8,717	38,597	47,314
February	45,163	59,458	104,621	73,677	62,911	136,588	5,709	25,249	30,958
March	50,097	61,508	111,605	76,614	67,084	143,698	7,512	30,106	37,618
<i>March quarter 1995</i>	137,425	184,967	322,392	231,346	218,222	449,568	21,938	93,952	115,890
AVERAGE LENGTH OF STAY (days)									
<i>March quarter 1994</i>	1.9	2.3	2.1	3.2	2.6	2.9	2.3	1.5	1.6
<i>March quarter 1995</i>	1.6	2.1	1.9	3.5	2.7	3.1	2.2	1.5	1.7
TAKINGS FROM ACCOMMODATION (\$'000)									
<i>March quarter 1994</i>	14,749	15,803	30,552	47,436	19,527	66,963	1,213	4,033	5,246
<i>1995—</i>									
January	4,708	5,514	10,222	19,916	8,647	28,563	468	1,733	2,201
February	5,887	5,509	11,396	14,709	4,990	19,698	335	1,193	1,528
March	6,541	6,406	12,947	16,865	5,539	22,404	442	1,438	1,880
<i>March quarter 1995</i>	17,137	17,429	34,565	51,489	19,176	70,665	1,245	4,364	5,609

TABLE 6—HOTELS, MOTELS AND GUEST HOUSES WITH FACILITIES BY STATISTICAL DIVISION,
QUEENSLAND—continued

Particulars	Darling Downs (SD)		South-West (SD)		Fitzroy (SD)		
	Licensed hotels	Motels, etc.	Total	Total	Licensed hotels	Motels, etc.	Total
ESTABLISHMENTS, CAPACITY AND EMPLOYMENT							
<i>March quarter 1994</i>							
Establishments	20	80	100	29	30	83	113
Guest rooms	372	1,362	1,734	460	1,129	1,992	3,121
Bed spaces	993	4,298	5,291	1,241	3,307	6,145	9,452
Employment (persons)	311	453	764	132	1,082	697	1,779
<i>March quarter 1995</i>							
Establishments	20	82	102	30	32	85	117
Guest rooms	379	1,403	1,782	469	1,095	2,057	3,152
Bed spaces	1,047	4,463	5,510	1,275	3,332	6,339	9,671
Employment (persons)	324	493	817	152	1,158	736	1,894
ROOM NIGHTS OCCUPIED							
<i>March quarter 1994</i>	12,430	60,128	72,558	14,367	41,663	95,506	137,169
<i>1995—</i>							
January	3,463	18,752	22,215	4,842	18,924	33,364	52,288
February	3,621	17,908	21,529	4,916	13,105	30,657	43,762
March	4,262	21,467	25,729	6,280	15,517	35,755	51,272
<i>March quarter 1995</i>	11,346	58,127	69,473	16,038	47,546	99,776	147,322
ROOM OCCUPANCY RATES (per cent)							
<i>March quarter 1994</i>	37.1	49.1	46.5	35.0	41.0	53.3	48.8
<i>1995—</i>							
January	29.5	43.1	40.2	33.3	55.7	52.3	53.5
February	34.1	45.6	43.1	38.3	42.7	53.2	49.6
March	36.3	49.4	46.6	44.1	45.7	56.1	52.5
<i>March quarter 1995</i>	33.3	46.0	43.3	38.5	48.2	53.9	51.9
GUEST NIGHTS							
<i>March quarter 1994</i>	20,891	111,916	132,807	21,253	79,928	161,627	241,555
<i>1995—</i>							
January	5,900	39,146	45,046	7,810	40,177	64,976	105,153
February	5,648	31,614	37,262	7,068	22,653	46,154	68,807
March	10,043	37,701	47,744	9,060	27,179	54,313	81,492
<i>March quarter 1995</i>	21,591	108,461	130,052	23,938	90,009	165,443	255,452
BED OCCUPANCY RATES (per cent)							
<i>March quarter 1994</i>	23.4	28.9	27.9	19.1	26.9	29.2	28.4
<i>1995</i>							
January	18.2	28.3	26.4	19.8	38.9	33.1	35.1
February	19.3	25.3	24.2	20.1	24.3	26.0	25.4
March	30.9	27.2	28.0	23.3	26.3	27.6	27.2
<i>March quarter 1995</i>	22.9	27.0	26.2	21.1	30.0	29.0	29.3
GUEST ARRIVALS							
<i>March quarter 1994</i>	14,728	80,938	95,666	15,223	26,287	103,920	130,207
<i>1995—</i>							
January	3,631	28,781	32,412	5,802	9,161	43,548	52,709
February	3,707	23,118	26,825	5,022	7,536	29,455	36,991
March	4,341	27,289	31,630	6,945	8,463	34,283	42,746
<i>March quarter 1995</i>	11,679	79,188	90,867	17,769	25,160	107,286	132,446
AVERAGE LENGTH OF STAY (days)							
<i>March quarter 1994</i>	1.4	1.4	1.4	1.4	3.0	1.6	1.9
<i>March quarter 1995</i>	1.8	1.4	1.4	1.3	3.6	1.5	1.9
TAKINGS FROM ACCOMMODATION (\$'000)							
<i>March quarter 1994</i>	612	3,234	3,847	681	3,960	5,217	9,177
<i>1995—</i>							
January	181	1,033	1,214	230	2,099	1,878	3,977
February	187	968	1,155	238	1,205	1,738	2,942
March	226	1,128	1,353	316	1,487	2,073	3,560
<i>March quarter 1995</i>	593	3,129	3,722	784	4,792	5,688	10,480

TABLE 6—HOTELS, MOTELS AND GUEST HOUSES WITH FACILITIES BY STATISTICAL DIVISION,
QUEENSLAND *continued*

Particulars	Central-West (SD)			Mackay (SD)		Northern (SD)	
	Total	Licensed hotels	Motels, etc.	Total	Licensed hotels	Motels, etc.	Total
ESTABLISHMENTS, CAPACITY AND EMPLOYMENT							
<i>March quarter 1994—</i>							
Establishments	16	28	59	87	21	56	77
Guest rooms	297	2,721	1,532	4,253	780	1,796	2,576
Bed spaces	905	8,836	4,943	13,779	2,179	5,417	7,596
Employment (persons)	97	2,394	552	2,946	1,071	559	1,630
<i>March quarter 1995</i>							
Establishments	16	28	62	90	21	56	77
Guest rooms	300	2,711	1,576	4,287	784	1,731	2,515
Bed spaces	899	8,835	4,919	13,754	2,098	5,398	7,496
Employment (persons)	133	2,533	596	3,129	1,152	523	1,675
ROOM NIGHTS OCCUPIED							
<i>March quarter 1994</i>	8,785	137,782	73,769	211,551	37,695	77,809	115,504
<i>1995 -</i>							
January	3,371	59,719	26,202	85,921	11,086	27,459	38,545
February	3,431	39,911	20,955	60,866	11,946	25,354	37,300
March	4,734	46,636	24,438	71,074	14,949	29,643	44,592
<i>March quarter 1995</i>	11,536	146,266	71,595	217,861	37,981	82,456	120,437
ROOM OCCUPANCY RATES (per cent)							
<i>March quarter 1994</i>	32.9	56.3	53.5	55.3	54.0	48.1	49.9
<i>1995 -</i>							
January	36.2	71.1	53.6	64.7	45.6	51.2	49.4
February	40.8	52.6	47.7	50.8	54.4	52.3	53.0
March	50.9	55.5	50.0	53.5	61.5	55.2	57.2
<i>March quarter 1995</i>	42.7	59.9	50.5	56.5	53.8	52.9	53.2
GUEST NIGHTS							
<i>March quarter 1994</i>	15,763	310,771	138,639	449,410	56,561	136,734	193,295
<i>1995</i>							
January	6,326	137,077	51,993	189,070	15,365	55,854	71,219
February	5,336	79,940	34,215	114,155	13,729	41,046	54,775
March	7,222	94,543	39,552	134,095	17,356	48,760	66,116
<i>March quarter 1995</i>	18,884	311,560	125,760	437,320	46,450	145,660	192,110
BED OCCUPANCY RATES (per cent)							
<i>March quarter 1994</i>	19.4	39.1	31.2	36.2	28.9	28.0	28.3
<i>1995—</i>							
January	22.7	50.0	34.1	44.3	23.6	33.4	30.6
February	21.2	32.3	25.0	29.7	23.4	27.2	26.1
March	25.9	34.5	25.9	31.5	26.7	29.1	28.5
<i>March quarter 1995</i>	23.3	39.2	28.5	35.4	24.6	30.0	28.5
GUEST ARRIVALS							
<i>March quarter 1994</i>	11,853	103,438	67,108	170,546	29,759	73,345	103,104
<i>1995—</i>							
January	5,023	33,062	27,039	60,101	8,247	26,131	34,378
February	3,741	21,899	16,868	38,767	7,669	20,842	28,511
March	4,764	25,449	20,611	46,060	9,713	26,133	35,846
<i>March quarter 1995</i>	13,528	80,410	64,518	144,928	25,629	73,106	98,735
AVERAGE LENGTH OF STAY (days)							
<i>March quarter 1994</i>	1.3	3.0	2.1	2.6	1.9	1.9	1.9
<i>March quarter 1995</i>	1.4	3.9	1.9	3.0	1.8	2.0	1.9
TAKINGS FROM ACCOMMODATION (\$'000)							
<i>March quarter 1994</i>	469	18,326	4,104	22,431	2,867	4,029	6,895
<i>1995</i>							
January	186	8,277	1,541	9,817	934	1,536	2,470
February	174	5,182	1,130	6,312	901	1,429	2,330
March	249	5,628	1,376	7,003	1,154	1,668	2,822
<i>March quarter 1995</i>	610	19,086	4,046	23,133	2,989	4,634	7,623

TABLE 6 — HOTELS, MOTELS AND GUEST HOUSES WITH FACILITIES BY STATISTICAL DIVISION,
QUEENSLAND—continued

Particulars	Far North (SD)			North-West (SD)			Queenland		
	Licensed hotels	Motels, etc.	Total	Licensed hotels	Motels, etc.	Total	Licensed hotels	Motels, etc.	Total
ESTABLISHMENTS, CAPACITY AND EMPLOYMENT									
<i>March quarter 1994</i>									
Establishments	39	97	136	13	17	30	258	835	1,093
Guest rooms	3,757	3,771	7,528	223	361	584	17,914	22,148	40,062
Bed spaces	11,145	11,975	23,120	573	1,039	1,612	53,344	68,414	121,758
Employment (persons)	3,209	1,577	4,786	159	109	268	20,456	8,310	28,766
<i>March quarter 1995—</i>									
Establishments	42	101	143	14	17	31	266	840	1,106
Guest rooms	4,061	4,015	8,076	250	366	616	18,425	22,552	40,977
Bed spaces	11,978	12,381	24,359	641	1,021	1,662	54,986	69,720	124,706
Employment (persons)	3,369	1,575	4,944	174	106	280	21,260	8,469	29,729
ROOM NIGHTS OCCUPIED									
<i>March quarter 1994</i>									
	223,879	195,978	419,857	7,104	12,799	19,903	1,028,503	1,112,294	2,140,797
<i>1995—</i>									
January	80,662	71,453	152,115	2,604	4,028	6,632	376,765	402,120	778,885
February	67,625	62,810	130,435	2,768	4,452	7,220	320,366	338,585	658,951
March	78,869	69,800	148,669	3,281	5,118	8,399	360,917	389,675	750,592
<i>March quarter 1995</i>									
	227,156	204,063	431,219	8,653	13,598	22,251	1,058,048	1,130,380	2,188,428
ROOM OCCUPANCY RATES (per cent)									
<i>March quarter 1994</i>									
	66.2	57.7	62.0	35.4	39.4	37.9	63.8	55.9	59.4
<i>1995—</i>									
January	64.1	57.4	60.8	33.6	35.5	34.7	66.0	57.6	61.4
February	59.5	55.9	57.7	39.5	43.4	41.9	62.1	53.7	57.5
March	62.6	56.2	59.4	42.3	45.1	44.0	63.3	55.8	59.2
<i>March quarter 1995</i>									
	62.2	56.5	59.3	38.5	41.3	40.1	63.9	55.8	59.4
GUEST NIGHTS									
<i>March quarter 1994</i>									
	418,042	361,765	779,807	9,098	20,410	29,508	1,943,909	2,123,096	4,067,005
<i>1995—</i>									
January	159,439	140,344	299,783	3,183	7,271	10,454	771,304	839,695	1,610,999
February	120,315	111,147	231,462	3,376	6,090	9,466	573,684	589,172	1,162,856
March	141,984	126,142	268,126	4,195	6,998	11,193	639,090	670,713	1,309,803
<i>March quarter 1995</i>									
	421,738	377,633	799,371	10,754	20,359	31,113	1,983,878	2,099,580	4,083,458
BED OCCUPANCY RATES (per cent)									
<i>March quarter 1994</i>									
	41.7	33.6	37.5	17.6	21.8	20.3	40.5	34.5	37.2
<i>1995—</i>									
January	42.9	36.6	39.7	16.0	23.0	20.3	45.2	38.9	41.7
February	35.9	32.1	33.9	18.8	21.3	20.3	37.3	30.2	33.3
March	38.2	32.9	35.5	21.1	22.1	21.7	37.5	31.1	33.9
<i>March quarter 1995</i>									
	39.1	33.9	36.5	18.6	22.2	20.8	40.1	33.5	36.4
GUEST ARRIVALS									
<i>March quarter 1994</i>									
	119,896	128,697	248,593	4,223	11,461	15,684	686,634	990,513	1,677,147
<i>1995—</i>									
January	49,906	46,438	96,344	1,389	4,493	5,882	238,650	376,763	615,413
February	41,936	37,670	79,606	1,443	3,466	4,909	210,218	286,321	496,539
March	49,540	40,892	90,432	1,941	4,120	6,061	235,568	321,837	557,405
<i>March quarter 1995</i>									
	141,382	125,000	266,382	4,773	12,079	16,852	684,436	984,921	1,669,357
AVERAGE LENGTH OF STAY (days)									
<i>March quarter 1994</i>									
	3.5	2.8	3.1	2.2	1.8	1.9	2.8	2.1	2.4
<i>March quarter 1995</i>									
	3.0	3.0	3.0	2.3	1.7	1.8	2.9	2.1	2.4
TAKINGS FROM ACCOMMODATION (\$'000)									
<i>March quarter 1994</i>									
	29,822	13,469	43,291	311	741	1,052	119,446	71,158	190,605
<i>1995</i>									
January	11,513	5,043	16,555	117	249	366	48,260	27,543	75,803
February	9,186	4,277	13,463	125	270	395	37,768	21,863	59,632
March	10,787	4,797	15,584	173	309	482	43,373	25,229	68,601
<i>March quarter 1995</i>									
	31,486	14,116	45,602	415	829	1,243	129,401	74,635	204,036

TABLE 7—HOTELS, MOTELS AND GUEST HOUSES WITH FACILITIES: STATISTICAL DIVISIONS AND

Statistical Divisions and selected Subdivisions and Statistical Local Areas	Establish- ments	Guest rooms	Bed spaces	Employ- ment (persons)	Room nights occupied				Room occupancy rates (per cent)			
					Jan.	Feb.	Mar.	Mar. qtr	Jan.	Feb.	Mar.	Mar. qtr
Ascot	4	77	226	20	1,499	1,339	1,509	4,347	62.8	62.1	63.2	62.7
Aspley	4	67	212	21	1,277	1,052	1,240	3,569	61.5	56.1	59.7	59.2
Brisbane City Core (a)												
City Inner	7	1,244	3,226	1,076	24,428	27,986	31,329	83,743	63.3	80.3	83.0	75.4
City Remainder	6	1,191	3,225	1,407	25,031	28,502	31,590	85,123	67.8	85.5	85.6	79.4
Kangaroo Point	9	389	1,200	230	7,237	6,115	7,001	20,353	64.3	59.7	58.1	60.6
Spring Hill	13	951	2,863	550	19,675	21,222	24,771	65,668	66.7	79.7	84.0	76.7
Balance	8	357	906	201	7,484	7,348	8,142	22,974	67.6	73.5	73.6	71.5
Licensed hotels	12	2,037	5,448	2,282	40,972	47,128	52,054	140,154	64.9	82.6	83.5	76.8
Motels and guest houses	31	2,095	5,972	1,182	42,883	44,045	50,779	137,707	66.9	75.9	78.2	73.6
Total	43	4,132	11,420	3,464	83,855	91,173	102,833	277,861	65.9	79.2	80.8	75.2
Chermside	3	85	258	26	1,528	1,350	1,504	4,382	58.0	56.7	57.1	57.3
Hamilton	10	319	981	223	5,864	6,024	7,139	19,027	59.3	67.4	72.2	66.3
Brisbane City (SSD) — Balance	43	1,131	3,275	957	19,086	17,007	19,973	56,066	54.4	53.7	57.0	55.1
Brisbane City (SSD)	107	5,811	16,372	4,711	113,109	117,945	134,198	365,252	63.1	72.8	74.8	70.1
Ipswich (C)	6	121	387	72	2,353	1,815	1,999	6,167	62.7	53.6	53.3	56.6
Logan City (SSD)	4	45	148	108	1,059	677	872	2,608	75.9	53.7	62.5	64.4
Redcliffe City (SSD)	4	97	259	48	1,664	1,484	1,357	4,505	55.3	54.6	45.1	51.6
Redland Shire (SSD)	6	91	254	132	1,576	1,234	1,219	4,029	55.9	48.4	43.2	49.2
Balance	7	117	374	125	1,806	1,701	1,785	5,292	49.8	51.9	49.2	50.3
Brisbane (SD)	134	6,282	17,794	5,196	121,567	124,856	141,430	387,853	62.7	71.2	72.9	68.9
Boonah (S)	3	26	76	10	200	163	210	573	24.8	22.4	26.1	24.5
Caloundra (C) Parts A and B	27	467	1,462	325	8,724	4,966	6,462	20,152	60.3	38.0	44.6	47.9
Esk (S)	5	39	136	9	295	205	278	778	24.4	18.8	23.0	22.2
Gold Coast City (SSD)												
Bilinga	5	67	255	14	1,528	853	911	3,292	73.6	45.5	43.9	54.6
Burleigh Heads	6	160	543	47	3,600	2,565	2,569	8,734	72.6	57.3	51.8	60.7
Coolangatta	6	259	835	93	5,545	3,651	5,255	14,451	69.1	50.3	65.5	62.0
Labrador	6	83	284	21	1,984	1,534	1,571	5,089	77.1	66.0	61.1	68.1
Mermaid Beach	13	200	611	36	4,404	3,166	3,446	11,016	71.0	56.5	55.6	61.2
Miami	6	103	331	21	2,143	1,311	1,355	4,809	67.1	45.5	42.4	51.9
Palm Beach	12	151	446	39	3,031	1,785	1,927	6,743	64.8	42.2	41.2	49.6
Southport	5	184	582	103	3,842	2,385	2,844	9,071	67.4	46.3	49.9	54.8
Surfers Paradise	28	3,716	11,432	2,383	95,133	80,972	87,487	263,592	82.6	77.8	75.9	78.8
Balance	17	2,215	7,447	4,305	56,343	48,435	50,448	155,226	82.1	78.1	73.5	77.9
Licensed hotels	14	4,072	12,887	6,053	106,736	95,301	102,123	304,160	84.6	83.6	80.9	83.0
Motels and guest houses	90	3,066	9,879	1,009	70,817	51,356	55,690	177,863	74.5	59.8	58.6	64.5
Total	104	7,138	22,766	7,062	177,553	146,657	157,813	482,023	80.2	73.4	71.3	75.0
Maroochy (S) Parts A and B	51	1,641	4,750	1,588	31,964	18,516	21,341	71,821	62.8	40.3	42.0	48.6
Noosa (S) Parts A and B	19	550	1,747	459	14,000	9,918	10,901	34,819	83.9	64.4	63.9	70.9
Balance	33	1,209	3,622	964	19,676	15,739	16,222	51,637	52.5	46.5	43.3	47.5
Moreton (SD)	242	11,070	34,559	10,417	252,412	196,164	213,227	661,803	73.6	63.3	62.1	66.5
Bundaberg (C)	24	437	1,336	137	8,203	6,614	7,697	22,514	60.6	54.1	56.8	57.2
Burnett (S) — Parts A and B	9	105	463	62	2,202	820	889	3,911	67.6	30.2	29.6	43.6
Cooloola (S)	15	289	911	92	4,564	3,202	3,939	11,705	50.9	39.6	44.0	45.0
Hervey Bay (C)	20	665	2,146	408	12,096	7,104	10,428	29,628	58.7	38.2	50.6	49.5
Isis (S)	5	66	212	18	966	679	612	2,257	47.2	36.7	29.9	38.0
Kingaroy (S)	6	140	390	63	1,188	1,810	2,160	5,158	27.4	46.2	49.8	40.9
Kolan (S)	4	54	215	18	833	558	608	1,999	49.8	36.9	36.3	41.1
Maryborough (C)	14	301	949	136	3,424	3,315	3,779	10,518	37.4	40.1	40.5	39.3
Miriam Vale (S)	7	124	423	69	2,640	1,669	1,752	6,061	68.7	48.1	45.6	54.3
Nanango (S)	4	50	126	12	741	524	573	1,838	47.8	37.4	37.0	40.8
Balance	16	197	556	77	2,120	2,177	2,749	7,046	34.7	39.5	45.0	39.7
Wide Bay-Burnett (SD)	124	2,428	7,727	1,092	38,977	28,472	35,186	102,635	51.9	42.1	46.9	47.1
Chinchilla (S)	5	78	202	25	497	656	835	1,988	20.6	30.0	34.5	28.3
Dalby (T)	7	148	441	51	1,709	1,906	1,935	5,550	37.2	46.0	42.2	41.7
Goondiwindi (T)	9	162	517	84	2,783	2,333	3,089	8,205	55.4	51.4	61.5	56.3
Inglewood (S)	4	38	117	16	426	464	458	1,348	36.2	43.6	38.9	39.4
Jondaryan (S)	4	40	111	9	289	327	452	1,068	23.3	29.2	36.5	29.7
Murilla (S)	3	47	132	15	667	509	680	1,856	45.8	38.7	46.7	43.9
Rosalie (S)	3	33	81	14	142	155	153	450	13.9	16.8	15.0	15.2
Stanthorpe (S)	8	137	438	64	1,275	1,325	1,688	4,288	30.0	34.5	39.7	34.8
Tanoom (S)	3	30	79	19	344	288	372	1,004	37.0	34.3	40.0	37.2
Toowoomba (C)	33	706	2,237	340	10,527	10,633	12,500	33,660	48.1	53.8	57.1	53.0
Warwick (S)												
Central	11	196	642	72	2,392	1,850	2,269	6,511	39.4	33.7	37.3	36.9
Balance	4	74	264	45	558	499	605	1,662	24.3	24.1	26.4	25.0
Total	15	270	906	117	2,950	2,349	2,874	8,173	35.2	31.1	34.3	33.6
Balance	8	93	249	63	606	584	693	1,883	21.0	22.4	24.0	22.5
Darling Downs (SD)	102	1,782	5,510	817	22,215	21,539	25,729	69,473	40.2	43.1	46.6	43.3
Baloane (S)	4	67	200	19	636	652	825	2,113	30.6	34.8	39.7	35.0
Murweh (S)	6	106	252	23	781	904	1,079	2,764	23.8	30.5	32.8	29.0
Paroo (S)	4	42	100	22	401	407	459	1,267	30.8	45.4	46.3	39.7
Roma (T)	8	169	477	59	1,911	2,106	2,813	6,830	36.5	44.5	53.7	44.9
Balance	8	85	246	29	1,113	847	1,104	3,064	42.2	35.6	41.9	40.1
South-West (S)	0	469	1,275	152	4,842	4,916	6,280	16,038	33.3	38.3	44.1	38.5

SELECTED SUBDIVISIONS AND STATISTICAL LOCAL AREAS, QUEENSLAND, MARCH QUARTER 1995

Guest nights				Guest arrivals				Takings from accommodation (\$'000)			
Jan.	Feb.	Mar.	Mar. qtr	Jan.	Feb.	Mar.	Mar. qtr	Jan.	Feb.	Mar.	Mar. qtr
2,908	2,275	2,498	7,681	1,858	1,522	1,365	4,745	97	86	96	279
2,958	2,015	2,212	7,185	1,875	1,273	1,346	4,494	72	57	66	196
39,279	41,132	45,456	125,867	28,887	31,976	32,747	93,610	2,279	2,818	3,185	8,282
42,871	37,108	41,696	121,675	17,362	19,555	20,926	57,843	2,795	3,553	3,962	10,309
15,516	10,896	11,328	37,740	6,156	4,685	5,601	16,442	660	617	686	1,963
37,663	33,475	37,689	108,827	16,342	16,540	18,292	51,174	1,521	1,683	1,981	5,185
13,686	11,622	12,288	37,596	4,394	5,040	4,250	13,684	555	541	606	1,701
62,953	63,026	69,234	195,213	38,302	41,485	46,088	125,875	4,396	5,603	6,233	16,232
86,062	71,207	79,223	236,492	34,839	36,311	35,728	106,878	3,413	3,609	4,187	11,209
149,015	134,233	148,457	431,705	73,141	77,796	81,816	232,753	7,809	9,212	10,420	27,441
3,107	2,196	2,534	7,837	1,619	1,136	1,297	4,052	98	80	91	269
10,001	9,131	10,940	30,072	6,376	6,148	7,168	19,692	484	548	641	1,672
33,410	27,124	31,424	91,958	14,017	11,788	13,151	38,956	1,170	1,021	1,236	3,427
201,399	176,974	198,065	576,438	98,886	99,663	106,143	304,692	9,729	11,004	12,550	33,283
4,352	2,726	2,966	10,044	1,635	873	1,176	3,684	161	119	117	396
2,246	1,108	1,437	4,791	1,519	778	822	3,119	68	42	56	166
2,576	2,190	1,963	6,729	988	867	673	2,528	67	54	50	171
3,189	2,045	2,032	7,266	1,318	901	961	3,180	87	59	56	203
3,102	2,361	2,566	8,029	1,820	1,539	1,830	5,189	110	118	118	346
216,864	187,404	209,029	613,297	106,166	104,621	111,605	322,392	10,222	11,396	12,947	34,565
384	270	401	1,055	295	213	328	836	8	7	10	26
21,852	9,823	12,530	44,205	8,741	6,189	7,526	22,456	599	264	361	1,224
572	330	469	1,371	383	255	328	966	11	9	10	30
3,564	1,611	2,087	7,262	1,125	567	685	2,377	105	44	46	194
8,130	4,552	4,315	16,997	2,489	1,787	1,730	6,006	293	143	138	574
13,919	7,140	11,034	32,093	2,978	2,283	2,853	8,114	453	247	359	1,059
3,432	2,435	2,278	8,145	1,995	1,226	1,381	4,602	98	50	51	199
10,196	6,578	6,388	23,162	4,502	2,707	2,518	9,727	270	115	123	508
5,246	2,616	2,663	10,525	2,872	1,741	1,854	6,467	141	59	56	256
6,646	3,241	3,581	13,468	3,058	2,006	2,195	7,259	169	66	75	310
9,133	4,751	5,375	19,259	2,950	1,727	1,957	6,634	235	123	152	510
210,626	164,498	172,868	547,992	62,555	54,462	56,163	173,180	10,261	7,882	9,115	27,258
123,547	103,141	98,078	324,766	24,683	24,986	24,347	74,016	8,070	6,036	6,699	20,805
225,999	194,402	196,081	616,482	57,665	54,859	56,412	168,936	14,401	11,400	13,085	38,885
168,440	106,161	112,586	387,187	51,542	38,633	39,271	129,446	5,694	3,367	3,729	12,789
394,439	300,563	308,667	1,003,669	109,207	93,492	95,683	298,382	20,094	14,766	16,813	51,674
79,568	36,378	40,778	156,724	23,846	15,324	17,306	56,476	3,758	1,813	2,172	7,743
36,831	22,622	24,751	84,204	10,553	8,014	9,109	27,676	2,042	1,248	1,353	4,643
42,134	28,214	28,024	98,372	16,257	13,101	13,418	42,776	2,050	1,591	1,685	5,326
575,780	398,200	415,620	1,389,600	169,282	136,588	143,698	449,568	28,563	19,698	22,404	70,665
14,597	9,573	11,216	35,386	9,724	6,568	7,432	23,724	417	320	378	1,116
7,093	2,104	2,141	11,338	2,616	1,057	1,258	4,931	131	43	40	214
9,896	5,664	6,940	22,500	6,338	4,097	4,760	15,195	254	167	201	623
29,035	13,518	19,521	62,074	11,605	6,383	9,330	27,318	729	436	635	1,800
2,200	1,256	1,123	4,579	2,064	1,170	1,055	4,289	43	28	25	96
1,930	2,616	3,266	7,812	1,406	1,815	2,357	5,578	57	84	100	241
1,914	1,117	1,198	4,229	1,879	1,082	1,138	4,099	44	27	30	101
6,946	6,126	6,592	19,664	5,819	4,720	5,298	15,837	174	164	187	525
5,446	3,204	3,190	11,840	2,960	1,617	1,768	6,345	247	150	146	543
967	681	789	2,437	453	373	420	1,246	28	20	23	71
3,270	3,062	4,130	10,462	2,450	2,076	2,802	7,328	77	90	114	281
83,294	48,921	60,106	192,321	47,314	30,958	37,618	115,890	2,201	1,528	1,880	5,609
967	1,284	1,544	3,795	589	775	872	2,236	24	30	39	93
2,996	2,774	2,858	8,628	2,368	2,087	2,195	6,550	83	91	95	269
6,249	3,910	5,193	15,352	5,532	3,374	4,358	13,264	166	123	164	453
563	575	602	1,740	532	546	569	1,647	14	16	16	47
472	476	755	1,703	400	432	584	1,416	13	13	20	46
1,232	740	999	2,971	1,088	680	947	2,715	35	27	34	97
171	187	193	551	156	178	167	501	6	7	6	19
2,645	2,269	2,957	7,871	2,061	1,810	2,164	6,035	63	62	78	203
592	425	540	1,557	517	348	412	1,277	15	11	15	41
21,726	19,393	25,925	67,044	13,888	12,674	14,680	41,242	603	623	705	1,931
4,513	2,915	3,628	11,056	3,856	2,517	3,178	9,551	130	101	120	350
1,514	1,302	1,300	4,116	765	798	759	2,322	37	27	34	98
6,027	4,217	4,928	15,172	4,621	3,315	3,937	11,873	167	128	154	448
1,406	1,012	1,250	3,668	760	606	745	2,111	25	23	28	76
45,046	37,262	47,744	130,052	32,412	26,825	31,630	90,867	1,214	1,155	1,353	3,722
1,098	887	1,230	3,215	874	706	946	2,526	30	30	39	100
1,306	1,601	1,521	4,428	846	674	913	2,433	39	42	54	135
579	550	594	1,723	431	447	507	1,385	16	16	17	49
3,184	2,892	4,136	10,212	2,608	2,395	3,431	8,434	100	110	151	361
1,643	1,138	1,579	4,360	1,043	800	1,148	2,991	44	40	55	139
7,810	7,068	9,060	23,938	5,802	5,022	6,945	17,769	230	238	316	784

TABLE 7—HOTELS, MOTELS AND GUEST HOUSES WITH FACILITIES: STATISTICAL DIVISIONS AND

Statistical Divisions and selected Subdivisions and Statistical Local Areas					Room nights occupied				Room occupancy rates (per cent)			
	Establish- ments	Guest rooms	Bed spaces	Employ- ment (persons)	Jan.	Feb.	Mar.	Mar. qtr	Jan.	Feb.	Mar.	Mar. qtr
Banana (S), Fitzroy (S) and Mount Morgan (S)	12	215	588	100	2,447	2,200	2,902	7,549	36.7	36.5	43.5	39.0
Bauhinia (S)	5	59	178	24	406	328	800	1,534	22.2	19.9	43.7	28.9
Duaringa (S)	6	109	336	71	1,563	1,656	1,677	4,896	46.3	54.3	49.6	49.9
Emerald (S)	9	262	710	156	3,802	3,924	4,685	12,411	46.8	53.5	57.7	52.6
Gladstone (C)	22	520	1,665	249	7,116	7,794	8,859	23,769	44.1	53.5	55.0	50.8
Livingstone (S)	16	678	2,195	632	14,155	7,339	9,481	30,975	67.3	38.7	45.1	50.8
Rockhampton (C)	36	1,077	3,260	459	18,087	16,688	18,526	53,301	54.2	55.3	55.5	55.0
Balance	11	232	739	203	4,712	3,833	4,342	12,887	65.5	59.0	60.4	61.7
<i>Fitzroy (SD)</i>	<i>117</i>	<i>3,152</i>	<i>9,671</i>	<i>1,894</i>	<i>52,288</i>	<i>43,762</i>	<i>51,272</i>	<i>147,322</i>	<i>53.5</i>	<i>49.6</i>	<i>52.5</i>	<i>51.9</i>
Barcaldine (S)	4	51	166	20	724	694	922	2,340	45.8	48.6	58.3	51.0
Longreach (S)	5	161	472	74	1,494	1,439	2,221	5,154	29.9	31.9	44.5	35.6
Balance	7	88	261	39	1,153	1,298	1,591	4,042	42.3	52.7	58.3	51.0
<i>Central-West (SD)</i>	<i>16</i>	<i>300</i>	<i>899</i>	<i>133</i>	<i>3,371</i>	<i>3,431</i>	<i>4,734</i>	<i>11,536</i>	<i>36.2</i>	<i>40.8</i>	<i>50.9</i>	<i>42.7</i>
Belyando (S)	7	123	325	74	1,836	1,539	1,722	5,097	48.2	44.7	45.2	46.0
Mackay (C) - Parts A and B	47	1,483	4,362	819	27,615	21,611	25,174	74,400	60.1	52.0	54.8	55.7
Sarina (S)	6	97	334	64	2,072	1,623	1,771	5,466	68.9	59.8	58.9	62.6
Whitsunday (S)	24	2,484	8,481	2,072	53,075	34,874	41,007	128,956	68.9	50.1	53.3	57.7
Balance	6	100	252	100	1,323	1,219	1,400	3,942	42.7	46.8	45.2	44.8
<i>Mackay (SD)</i>	<i>90</i>	<i>4,287</i>	<i>13,754</i>	<i>3,129</i>	<i>85,921</i>	<i>60,866</i>	<i>71,074</i>	<i>217,861</i>	<i>64.7</i>	<i>50.8</i>	<i>53.5</i>	<i>56.5</i>
Bowen (S)	10	235	629	102	2,414	1,776	2,860	7,050	33.1	27.0	39.3	33.3
Burdekin (S)	7	94	282	37	1,238	1,520	1,943	4,701	42.5	57.8	66.7	55.6
Charters Towers (C)	8	127	437	59	2,065	1,772	2,392	6,229	52.5	49.8	60.8	54.5
Townsville (C)												
City	8	586	1,602	868	8,579	9,877	12,749	31,205	47.2	60.2	70.2	59.2
Hermit Park	3	89	276	15	1,492	1,214	1,507	4,213	54.1	48.7	54.6	52.6
North Ward-Castle Hill	10	408	1,345	148	6,795	6,550	7,317	20,662	53.7	57.3	57.9	56.3
Rosslea	6	161	492	46	2,751	2,674	2,977	8,402	55.1	59.3	59.6	58.0
Balance	17	691	2,113	322	11,941	10,723	11,367	34,031	55.7	55.4	53.1	54.7
Total	44	1,935	5,828	1,399	31,558	31,038	35,917	98,513	52.6	57.3	59.9	56.6
Balance	8	124	320	78	1,270	1,194	1,480	3,944	33.0	34.4	38.5	35.3
<i>Northern (SD)</i>	<i>77</i>	<i>2,515</i>	<i>7,496</i>	<i>1,675</i>	<i>38,545</i>	<i>37,300</i>	<i>44,592</i>	<i>120,437</i>	<i>49.4</i>	<i>53.0</i>	<i>57.2</i>	<i>53.2</i>
Atherton (S)	8	104	341	37	1,487	925	1,197	3,609	46.1	31.8	37.1	38.6
Cairns (C)												
Licensed hotels	15	2,199	6,622	1,741	50,951	45,240	51,598	147,789	74.7	73.5	75.7	74.7
Motels and guest houses	35	2,218	6,800	885	46,471	41,777	46,736	134,984	67.6	67.3	68.0	67.6
Total	50	4,417	13,422	2,626	97,422	87,017	98,334	282,773	71.1	70.4	71.8	71.1
Cardwell (S) and Johnstone (S)	22	674	2,047	397	9,657	7,270	8,465	25,392	46.2	38.5	40.8	42.0
Douglas (S)	19	1,299	3,955	1,028	19,871	14,941	19,561	54,373	49.3	41.1	48.6	46.5
Eacham (S)	5	98	274	30	936	539	642	2,117	30.8	19.6	21.1	24.0
Herberton (S)	3	27	86	21	150	199	185	534	17.9	26.3	22.1	22.0
Mareeba (S)	8	139	442	80	2,235	1,649	1,803	5,687	51.9	42.4	41.8	45.5
Mulgrave (S) - Parts A and B	15	1,004	2,864	553	17,341	15,229	15,434	48,004	55.7	54.2	49.6	53.1
Torres (S)	3	78	263	38	702	825	998	2,525	29.0	37.8	41.3	36.0
Balance	10	236	665	134	2,314	1,841	2,050	6,205	31.6	27.9	28.0	29.2
<i>Far North (SD)</i>	<i>143</i>	<i>8,076</i>	<i>24,359</i>	<i>4,944</i>	<i>152,115</i>	<i>130,435</i>	<i>148,669</i>	<i>431,219</i>	<i>60.8</i>	<i>57.7</i>	<i>59.4</i>	<i>59.3</i>
Carpentaria (S)	4	63	181	27	324	362	461	1,147	16.6	20.5	23.6	20.2
Flinders (S)	4	54	142	27	583	651	878	2,112	34.8	43.1	52.4	43.5
Mount Isa (C)	15	398	1,027	189	4,784	5,084	5,791	15,659	38.8	45.6	46.9	43.7
Balance	8	101	312	37	941	1,123	1,269	3,333	30.1	39.7	40.5	36.7
<i>North-West (SD)</i>	<i>31</i>	<i>616</i>	<i>1,662</i>	<i>280</i>	<i>6,632</i>	<i>7,220</i>	<i>8,399</i>	<i>22,251</i>	<i>34.7</i>	<i>41.9</i>	<i>44.0</i>	<i>40.1</i>
<i>Queensland</i>	<i>1,106</i>	<i>40,977</i>	<i>124,706</i>	<i>29,729</i>	<i>778,885</i>	<i>658,951</i>	<i>750,592</i>	<i>2,188,428</i>	<i>61.4</i>	<i>57.5</i>	<i>59.2</i>	<i>59.4</i>
Albert (S) (h)	11	677	1,998	476	12,792	9,685	9,115	31,592	61.0	51.1	43.4	51.8
Beaudesert (S) (h)	12	388	1,212	376	5,279	4,707	5,493	15,479	43.9	43.3	45.7	44.3
Caboolture (S) (h)	8	129	405	177	2,087	1,307	1,765	5,159	52.2	36.2	44.1	44.4
Great Barrier Reef islands (c) Sunshine Coast	21	2,687	8,830	2,697	60,725	40,006	47,075	147,806	72.9	53.2	56.5	61.1
Statistical District (d)												
Licensed hotels	14	1,126	3,085	1,809	23,825	14,784	17,047	55,656	68.3	46.9	48.8	54.9
Motels and guest houses	65	1,366	4,341	507	28,250	17,159	19,974	65,383	67.3	44.9	47.2	53.3
Total	79	2,492	7,426	2,316	52,075	31,943	37,021	121,039	67.7	45.8	47.9	54.1

(a) Brisbane City Core comprises the suburbs of Bowen Hills, City, Dutton Park, Fortitude Valley, Herston, Highgate Hill, Kangaroo Point, Kelvin Grove, Milton, New Farm, Newstead, Paddington, Red Hill, South Brisbane, Spring Hill, West End and Woolloongabba. (b) Albert, Beaudesert and Caboolture Shires straddle the boundary line between Brisbane and Moreton Statistical Divisions. (c) Great Barrier Reef islands establishments are those on coastal islands from Lady Elliot in the south to Lizard in the north. (d) Sunshine Coast Statistical District comprises the more urban coastal portions of Caloundra City and Maroochy and Noosa Shires.

SELECTED SUBDIVISIONS AND STATISTICAL LOCAL AREAS, QUEENSLAND, MARCH QUARTER 1995—continued

Guest nights				Guest arrivals				Takings from accommodation (\$'000)			
Jan.	Feb.	Mar.	Mar. qtr	Jan.	Feb.	Mar.	Mar. qtr	Jan.	Feb.	Mar.	Mar. qtr
3,930	3,366	4,390	11,686	2,448	2,318	3,043	7,809	121	114	149	383
761	478	1,538	2,777	497	356	785	1,638	22	20	77	119
2,083	2,107	2,106	6,296	913	1,075	1,058	3,046	76	85	82	242
6,002	5,511	6,381	17,894	4,320	3,951	4,555	12,826	212	222	270	705
11,272	10,617	11,711	33,600	6,914	5,640	5,707	18,261	343	434	491	1,267
35,148	33,912	37,954	107,014	21,509	17,899	19,478	57,886	1,545	1,683	1,895	5,123
35,853	25,981	29,675	91,509	26,215	16,679	19,333	62,227	1,019	912	1,032	2,963
10,104	6,835	7,737	24,676	3,503	2,494	2,799	8,796	640	472	564	1,676
105,153	68,807	81,492	255,452	52,709	36,991	42,746	132,446	3,977	2,942	3,560	10,480
1,126	950	1,242	3,318	914	769	952	2,635	32	28	35	95
3,153	2,470	3,543	9,166	2,590	1,647	2,272	6,509	99	91	133	324
2,047	1,916	2,437	6,400	1,519	1,325	1,540	4,384	55	55	81	191
6,326	5,336	7,222	18,884	5,023	3,741	4,764	13,528	186	174	249	610
2,441	1,920	1,966	6,327	1,119	1,128	1,354	3,601	87	79	86	252
54,415	35,937	41,831	132,183	22,286	14,638	17,798	54,722	1,847	1,351	1,570	4,768
4,502	2,477	2,706	9,685	2,830	1,159	1,529	5,518	97	66	74	236
125,257	72,123	85,483	282,863	32,828	21,001	24,249	78,078	7,713	4,749	5,184	17,646
2,455	1,698	2,109	6,262	1,038	841	1,130	3,009	73	68	90	230
189,070	114,155	134,095	437,320	60,101	38,767	46,060	144,928	9,817	6,312	7,003	23,133
4,442	2,885	4,362	11,689	2,516	1,751	2,251	6,518	103	86	119	309
2,038	2,368	2,674	7,080	1,374	1,580	1,794	4,748	56	68	82	205
3,826	2,769	3,862	10,457	2,083	1,575	2,316	5,974	106	92	127	325
12,000	11,045	14,544	37,589	6,681	6,711	8,520	21,912	741	796	1,026	2,563
3,270	2,126	2,706	8,102	1,893	1,406	1,777	5,076	67	54	69	190
12,544	9,383	11,382	33,309	5,319	4,329	5,482	15,130	398	390	439	1,228
6,257	5,167	5,827	17,251	3,847	2,740	3,408	9,995	125	116	130	371
24,762	17,122	18,584	60,468	9,613	7,375	9,184	26,172	709	632	706	2,046
58,833	44,843	53,043	156,719	27,353	22,561	28,371	78,285	2,040	1,988	2,369	6,397
2,080	1,910	2,175	6,165	1,052	1,044	1,114	3,210	165	96	124	386
71,219	54,775	66,116	192,110	34,378	28,511	35,846	98,735	2,470	2,330	2,822	7,623
2,859	1,495	1,853	6,207	1,981	1,074	1,206	4,261	62	40	50	152
93,487	75,823	87,904	257,214	34,015	29,891	35,254	99,160	5,949	5,242	5,850	17,041
89,394	73,568	83,989	246,951	27,632	23,865	26,240	77,737	3,270	2,839	3,191	9,300
182,881	149,391	171,893	504,165	61,647	53,756	61,494	176,897	9,219	8,081	9,041	26,341
20,267	12,386	14,689	47,342	7,156	5,214	6,104	18,474	1,398	875	1,100	3,373
43,285	29,991	40,250	113,526	10,650	8,139	9,931	28,720	3,613	2,731	3,503	9,846
1,866	878	1,104	3,848	1,221	616	831	2,668	49	26	32	107
223	268	256	747	174	155	226	555	5	7	6	18
4,776	3,070	3,048	10,894	2,036	1,268	1,319	4,623	108	75	84	267
38,264	29,751	30,138	98,153	9,272	7,778	7,492	24,542	1,520	1,179	1,220	3,920
1,110	1,225	1,641	3,976	289	289	382	960	95	96	126	317
4,252	3,007	3,254	10,513	1,918	1,317	1,447	4,682	488	352	422	1,261
299,783	231,462	268,126	799,371	96,344	79,606	90,432	266,382	16,555	13,463	15,584	45,602
474	495	675	1,644	240	269	304	813	15	18	23	56
925	830	1,202	2,957	736	557	846	2,139	27	25	39	91
7,256	6,543	7,590	21,389	3,603	2,900	3,649	10,152	281	300	361	942
1,799	1,598	1,726	5,123	1,303	1,183	1,262	3,748	44	52	59	155
10,454	9,466	11,193	31,113	5,882	4,909	6,061	16,852	366	395	482	1,243
1,610,799	1,162,856	1,309,803	4,083,458	615,413	496,539	557,405	1,669,357	75,803	59,632	68,601	204,036
27,378	16,896	16,040	60,314	9,554	7,425	7,063	24,042	1,512	1,119	1,087	3,717
10,313	8,270	9,375	27,958	4,707	4,109	4,596	13,412	444	397	516	1,357
5,608	3,072	2,910	11,590	2,619	1,663	1,987	6,269	123	79	100	302
136,933	81,972	97,184	316,089	30,311	20,227	22,706	73,244	10,454	6,588	7,377	24,418
61,718	28,960	32,953	123,631	14,234	10,456	12,085	36,775	3,944	2,038	2,463	8,445
70,871	37,029	41,746	149,646	25,496	16,851	19,307	61,654	2,277	1,194	1,315	4,785
132,589	65,989	74,699	273,277	39,730	27,307	31,392	98,429	6,221	3,231	3,778	13,230

TABLE 8 — HOLIDAY FLATS, UNITS AND HOUSES BY STATISTICAL DIVISION, QUEENSLAND

Particulars	Brisbane (SD)			Moreton (SD)			Wide Bay-Burnett (SD)			Fitzroy (SD)
	Real estate agents	Other letting entities	Total	Real estate agents	Other letting entities	Total	Real estate agents	Other letting entities	Total	Total
LETTING ENTITIES, CAPACITY AND EMPLOYMENT										
<i>March quarter 1994—</i>										
Letting entities	6	26	32	60	339	399	16	23	39	10
Flats, units and houses										
Single bedroom	17	170	187	176	2,148	2,324	23	29	52	50
Multiple bedroom	207	298	505	3,588	7,083	10,671	371	162	533	39
<i>Total flats, units and houses</i>	<i>224</i>	<i>468</i>	<i>692</i>	<i>3,764</i>	<i>9,231</i>	<i>12,995</i>	<i>394</i>	<i>191</i>	<i>585</i>	<i>89</i>
Bed spaces	1,215	1,857	3,072	16,394	35,454	51,848	1,912	818	2,730	345
Employment (persons) (a)		99	99	—	1,478	1,478		60	60	22
<i>March quarter 1995—</i>										
Letting entities	6	27	33	58	363	421	16	28	44	11
Flats, units and houses										
Single bedroom	13	233	246	167	2,134	2,301	28	39	67	55
Multiple bedroom	267	322	589	3,621	7,996	11,617	432	267	699	46
<i>Total flats, units and houses</i>	<i>280</i>	<i>555</i>	<i>835</i>	<i>3,788</i>	<i>10,130</i>	<i>13,918</i>	<i>460</i>	<i>306</i>	<i>766</i>	<i>101</i>
Bed spaces	1,480	2,065	3,545	16,496	39,716	56,212	2,206	1,358	3,564	396
Employment (persons) (a)	—	111	111		1,645	1,645	—	101	101	23
UNIT NIGHTS OCCUPIED										
<i>March quarter 1994</i>	<i>10,715</i>	<i>28,467</i>	<i>39,182</i>	<i>171,784</i>	<i>546,881</i>	<i>718,665</i>	<i>12,172</i>	<i>9,608</i>	<i>21,780</i>	<i>3,642</i>
<i>1995—</i>										
January	7,192	12,985	20,177	82,835	258,684	341,519	7,580	6,304	13,884	2,274
February	3,008	10,344	13,352	42,667	160,605	203,272	3,330	3,661	6,991	981
March	2,438	11,006	13,444	44,902	161,943	206,845	3,485	4,274	7,759	1,142
<i>March quarter 1995</i>	<i>12,638</i>	<i>34,335</i>	<i>46,973</i>	<i>170,404</i>	<i>581,232</i>	<i>751,636</i>	<i>14,395</i>	<i>14,239</i>	<i>28,634</i>	<i>4,397</i>
UNIT OCCUPANCY RATES (per cent)										
<i>March quarter 1994</i>	<i>53.1</i>	<i>67.6</i>	<i>62.9</i>	<i>50.7</i>	<i>65.9</i>	<i>61.5</i>	<i>34.3</i>	<i>55.9</i>	<i>41.4</i>	<i>45.5</i>
<i>1995—</i>										
January	82.9	75.5	77.9	70.5	82.4	79.2	53.2	66.5	58.5	72.6
February	38.4	66.6	57.1	40.2	56.7	52.2	25.9	42.7	32.6	34.7
March	28.1	64.0	51.9	38.2	51.6	48.0	24.4	45.1	32.7	36.5
<i>March quarter 1995</i>	<i>50.2</i>	<i>68.7</i>	<i>62.5</i>	<i>50.0</i>	<i>63.8</i>	<i>60.0</i>	<i>34.8</i>	<i>51.7</i>	<i>41.5</i>	<i>48.4</i>
UNIT LETTINGS										
<i>March quarter 1994</i>	<i>1,814</i>	<i>4,180</i>	<i>5,994</i>	<i>15,894</i>	<i>90,251</i>	<i>106,145</i>	<i>1,420</i>	<i>2,046</i>	<i>3,466</i>	<i>1,380</i>
<i>1995—</i>										
January	1,001	2,279	3,280	8,410	38,692	47,102	731	1,446	2,177	701
February	557	1,801	2,358	4,875	27,590	32,465	339	1,052	1,391	422
March	421	1,847	2,268	5,039	29,499	34,538	415	1,243	1,658	496
<i>March quarter 1995</i>	<i>1,979</i>	<i>5,927</i>	<i>7,906</i>	<i>18,324</i>	<i>95,781</i>	<i>114,105</i>	<i>1,485</i>	<i>3,741</i>	<i>5,226</i>	<i>1,619</i>
AVERAGE LENGTH OF STAY (days)										
<i>March quarter 1994</i>	<i>5.9</i>	<i>6.8</i>	<i>6.5</i>	<i>10.8</i>	<i>6.1</i>	<i>6.8</i>	<i>8.6</i>	<i>4.7</i>	<i>6.3</i>	<i>2.6</i>
<i>1995—</i>										
January	7.2	5.7	6.2	9.8	6.7	7.3	10.4	4.4	6.4	3.2
February	5.4	5.7	5.7	8.8	5.8	6.3	9.8	3.5	5.0	2.3
March	5.8	6.0	5.9	8.9	5.5	6.0	8.4	3.4	4.7	2.3
<i>March quarter 1995</i>	<i>6.4</i>	<i>5.8</i>	<i>5.9</i>	<i>9.3</i>	<i>6.1</i>	<i>6.6</i>	<i>9.7</i>	<i>3.8</i>	<i>5.5</i>	<i>2.7</i>
TAKINGS FROM ACCOMMODATION (\$'000)										
<i>March quarter 1994</i>	<i>319</i>	<i>1,938</i>	<i>2,257</i>	<i>7,766</i>	<i>39,029</i>	<i>46,796</i>	<i>432</i>	<i>431</i>	<i>863</i>	<i>186</i>
<i>1995—</i>										
January	237	972	1,208	4,846	22,290	27,136	312	383	695	126
February	78	780	858	1,556	11,033	12,590	89	184	273	38
March	58	834	892	1,688	10,516	12,204	114	211	325	50
<i>March quarter 1995</i>	<i>373</i>	<i>2,586</i>	<i>2,958</i>	<i>8,090</i>	<i>43,840</i>	<i>51,930</i>	<i>516</i>	<i>778</i>	<i>1,294</i>	<i>214</i>

TABLE 8 — HOLIDAY FLATS, UNITS AND HOUSES BY STATISTICAL DIVISION, QUEENSLAND—continued

Particulars	Mackay (SD)		Northern (SD)		Far North (SD)		Balance of State	Queensland	
	Total	Real estate agents	Other letting entities	Total	Total	Total	Real estate agents	Other letting entities	Total
LETTING ENTITIES, CAPACITY AND EMPLOYMENT									
<i>March quarter 1994—</i>									
Letting entities	20	4	26	30	71	4	90	515	605
Flats, units and houses									
Single bedroom	93	3	127	130	637	24	257	3,240	3,497
Multiple bedroom	115	58	116	174	762	25	4,331	8,493	12,824
<i>Total flats, units and houses</i>	<i>208</i>	<i>61</i>	<i>243</i>	<i>304</i>	<i>1,399</i>	<i>49</i>	<i>4,588</i>	<i>11,733</i>	<i>16,321</i>
Bed spaces	926	326	1,048	1,374	5,387	308	20,456	45,534	65,990
Employment (persons) (a)	79	—	66	66	308	13	—	2,125	2,125
<i>March quarter 1995—</i>									
Letting entities	16	4	25	29	77	10	88	553	641
Flats, units and houses									
Single bedroom	60	3	124	127	689	50	228	3,367	3,595
Multiple bedroom	114	50	113	163	918	83	4,473	9,756	14,229
<i>Total flats, units and houses</i>	<i>174</i>	<i>53</i>	<i>237</i>	<i>290</i>	<i>1,607</i>	<i>133</i>	<i>4,701</i>	<i>13,123</i>	<i>17,824</i>
Bed spaces	786	295	1,028	1,323	6,162	640	20,977	51,651	72,628
Employment (persons) (a)	57	—	59	59	354	34	—	2,384	2,384
UNIT NIGHTS OCCUPIED									
<i>March quarter 1994</i>	<i>10,099</i>	<i>918</i>	<i>8,948</i>	<i>9,866</i>	<i>57,443</i>	<i>2,206</i>	<i>196,893</i>	<i>665,990</i>	<i>862,883</i>
<i>1995</i>									
January	3,436	563	4,653	5,216	25,203	1,974	99,326	314,357	413,683
February	2,320	63	2,625	2,688	17,121	1,237	49,849	198,113	247,962
March	2,510	92	2,865	2,957	20,818	1,675	51,767	205,383	257,150
<i>March quarter 1995</i>	<i>8,266</i>	<i>718</i>	<i>10,143</i>	<i>10,861</i>	<i>63,142</i>	<i>4,886</i>	<i>200,942</i>	<i>717,853</i>	<i>918,795</i>
UNIT OCCUPANCY RATES (per cent)									
<i>March quarter 1994</i>	<i>54.7</i>	<i>16.7</i>	<i>40.9</i>	<i>36.1</i>	<i>45.8</i>	<i>50.0</i>	<i>47.7</i>	<i>63.2</i>	<i>58.8</i>
<i>1995</i>									
January	63.7	34.3	63.3	58.0	50.6	47.9	68.2	77.3	74.9
February	49.3	4.2	41.1	34.2	38.1	33.2	37.9	54.0	49.8
March	48.2	5.6	39.0	32.9	41.8	40.6	35.5	50.5	46.6
<i>March quarter 1995</i>	<i>54.0</i>	<i>15.1</i>	<i>48.1</i>	<i>42.0</i>	<i>43.7</i>	<i>40.8</i>	<i>47.5</i>	<i>60.8</i>	<i>57.3</i>
UNIT LETTINGS									
<i>March quarter 1994</i>	<i>2,618</i>	<i>140</i>	<i>2,132</i>	<i>2,272</i>	<i>11,298</i>	<i>1,004</i>	<i>19,426</i>	<i>114,751</i>	<i>134,177</i>
<i>1995—</i>									
January	813	68	1,135	1,203	5,249	527	10,320	50,732	61,052
February	563	25	600	625	3,827	512	5,864	36,299	42,163
March	616	19	728	747	4,573	654	5,951	39,599	45,550
<i>March quarter 1995</i>	<i>1,992</i>	<i>112</i>	<i>2,463</i>	<i>2,575</i>	<i>13,649</i>	<i>1,693</i>	<i>22,135</i>	<i>126,630</i>	<i>148,765</i>
AVERAGE LENGTH OF STAY (days)									
<i>March quarter 1994</i>	<i>3.9</i>	<i>6.6</i>	<i>4.2</i>	<i>4.3</i>	<i>5.1</i>	<i>2.2</i>	<i>10.1</i>	<i>5.8</i>	<i>6.4</i>
<i>1995</i>									
January	4.2	8.3	4.1	4.3	4.8	3.7	9.6	6.2	6.8
February	4.1	2.5	4.4	4.3	4.5	2.4	8.5	5.5	5.9
March	4.1	4.8	3.9	4.0	4.6	2.6	8.7	5.2	5.6
<i>March quarter 1995</i>	<i>4.1</i>	<i>6.4</i>	<i>4.1</i>	<i>4.2</i>	<i>4.6</i>	<i>2.9</i>	<i>9.1</i>	<i>5.7</i>	<i>6.2</i>
TAKINGS FROM ACCOMMODATION (\$'000)									
<i>March quarter 1994</i>	<i>570</i>	<i>44</i>	<i>491</i>	<i>534</i>	<i>4,415</i>	<i>93</i>	<i>8,646</i>	<i>47,068</i>	<i>55,714</i>
<i>1995—</i>									
January	226	30	267	298	1,813	112	5,503	26,112	31,615
February	124	3	141	144	1,207	55	1,769	13,519	15,288
March	120	4	151	155	1,399	78	1,911	13,313	15,224
<i>March quarter 1995</i>	<i>471</i>	<i>37</i>	<i>559</i>	<i>596</i>	<i>4,419</i>	<i>245</i>	<i>9,183</i>	<i>52,944</i>	<i>62,127</i>

(a) Employment numbers exclude real estate agents and their employees.

TABLE 9—HOLIDAY FLATS, UNITS AND HOUSES: STATISTICAL DIVISIONS AND SELECTED

Statistical Divisions and Selected Subdivisions and Statistical Local Areas	Flats, units and houses				Bed spaces	Employment (persons) (a)	Unit nights occupied				
	Letting entities	Single bedroom	Multiple bedroom	Total			Jan.	Feb.	Mar.	Mar. qtr	
Brisbane City (SSD)											
Brisbane City Core (b)	8	84	110	194	712	33	4,925	4,561	5,206	14,692	
Balance	13	101	147	248	874	61	5,209	4,463	4,478	14,150	
Total	21	185	257	442	1,586	94	10,134	9,024	9,684	28,842	
Redland (S) Balance (c)	8	57	275	332	1,629	15	8,910	3,694	2,997	15,601	
Balance	4	4	57	61	330	2	1,133	634	763	2,530	
Brisbane (SD)	33	246	589	835	3,545	111	20,177	13,352	13,444	46,973	
Caboolture (S) Part B	7	1	253	254	1,227	4	5,494	2,608	2,955	11,057	
Gold Coast City (SSD)											
Biggera Waters	4	15	110	125	502	14	2,762	2,001	2,419	7,182	
Broadbeach	25	182	584	766	2,834	113	19,400	11,239	11,568	42,207	
Burleigh Heads	26	125	807	932	3,621	116	22,758	12,695	13,719	49,172	
Coolangatta	25	113	836	949	3,719	84	22,956	15,490	17,263	55,709	
Currumbin	5	7	184	191	948	21	5,053	2,447	2,413	9,913	
Labrador	6	10	56	66	271	15	1,526	996	1,211	3,733	
Main Beach-Broadwater	13	13	261	274	1,210	43	6,193	3,027	3,177	12,397	
Mermaid Beach	12	18	291	309	1,283	25	8,092	4,669	4,341	17,102	
Miami	9	24	232	256	1,128	28	4,747	2,597	2,796	10,140	
Palm Beach	14	3	382	385	1,573	42	9,193	4,445	4,530	18,168	
Surfers Paradise	106	1,422	2,348	3,770	13,100	568	98,477	68,433	66,236	233,146	
Tugun	7	7	226	233	960	16	5,343	2,889	3,076	11,308	
Balance	5	24	62	86	293	17	1,918	1,207	1,337	4,462	
Total	257	1,963	6,379	8,342	31,442	1,102	208,418	132,135	134,086	474,639	
Sunshine Coast Statistical District (d)											
Caloundra (C) Part A	25	37	1,100	1,137	5,307	59	29,179	14,931	14,868	58,978	
Maroochy (S) Part A	53	107	1,567	1,674	7,274	166	39,507	20,979	21,441	81,927	
Noosa (S) Part A	73	186	2,166	2,352	10,181	264	54,631	29,541	30,323	114,495	
Total	151	330	4,833	5,163	22,762	489	123,317	65,451	66,632	255,400	
Balance	6	7	152	159	781	50	4,290	3,078	3,172	10,540	
Moreton (SD)	421	2,301	11,617	13,918	56,212	1,645	341,519	203,272	206,845	751,636	
Burnett (S) Parts A and B	5	7	72	79	304	14	1,518	674	988	3,180	
Cooloola (S)	4	16	141	157	839	9	1,493	264	371	2,128	
Hervey Bay (C)	32	39	469	508	2,316	71	10,288	5,838	6,092	22,218	
Balance	3	5	17	22	105	7	585	215	308	1,108	
Wide Bay-Burnett (SD)	44	67	699	766	3,564	101	13,884	6,991	7,759	28,634	
Darling Downs (SD)	5	2	68	70	414	17	1,346	642	822	2,810	
Fitzroy (SD)	11	55	46	101	396	23	2,274	981	1,142	4,397	
Mackay (C) Parts A and B	4	17	54	71	371	21	1,622	1,086	1,246	3,954	
Whitsunday (S)	12	43	60	103	415	36	1,814	1,234	1,264	4,312	
Mackay (SD)	16	60	114	174	786	57	3,436	2,320	2,510	8,266	
Townsville (C)											
Magnetic Island	12	53	72	125	595	17	1,728	479	587	2,794	
North Ward-Castle Hill	6	11	43	54	237	13	1,503	1,293	1,357	4,153	
Balance	3	13	24	37	159	7	942	548	544	2,034	
Total	21	77	139	216	991	37	4,173	2,320	2,488	8,981	
Balance	8	50	24	74	332	22	1,043	368	469	1,880	
Northern (SD)	29	127	163	290	1,323	59	5,216	2,688	2,957	10,861	
Cairns (C)	28	366	383	749	2,713	109	13,247	10,043	12,565	35,855	
Douglas (S)	21	90	268	358	1,452	60	5,098	3,206	3,788	12,092	
Mulgrave (S) Parts A and B	21	211	215	426	1,655	169	6,008	3,632	4,239	13,879	
Balance	7	22	52	74	342	16	850	240	226	1,316	
Far North (SD)	77	689	918	1,607	6,162	354	25,203	17,121	20,818	63,142	
Balance of State	5	48	15	63	226	17	628	595	853	2,076	
Queensland	641	3,595	14,229	17,824	72,628	2,384	413,683	247,962	257,150	918,795	

(a) Employment numbers exclude real estate agents and their employees. (b) Brisbane City Core comprises the suburbs of Bowen Hills, City, Dutton Park, Fortitude Valley, Herston, Highgate Hill, Kangaroo Point, Kelvin Grove, Milton, New Farm, Newstead, Paddington, Red Hill, South Brisbane, Spring Hill, West End and Woolloongabba. (c) Redland (S) Balance comprises properties on North Stradbroke and Coochiemudlo Islands. (d) Sunshine Coast Statistical District comprises the more urban coastal portions of Caloundra City and Maroochy and Noosa Shires.

SUBDIVISIONS AND STATISTICAL LOCAL AREAS, QUEENSLAND, MARCH QUARTER 1995

Unit occupancy rates (per cent)				Unit lettings				Average length of stay (days)	Takings from accommodation (\$ '000)			
Jan.	Feb.	Mar.	Mar. qtr	Jan.	Feb.	Mar.	Mar. qtr	Mar. qtr	Jan.	Feb.	Mar.	Mar. qtr
81.9	84.0	86.6	84.1	585	455	417	1,457	10.1	423	384	453	1,260
67.8	64.3	58.2	63.4	1,191	982	1,023	3,196	4.4	364	311	307	983
74.0	72.9	70.7	72.5	1,776	1,437	1,440	4,653	6.2	787	695	760	2,242
86.6	39.7	29.1	52.2	1,363	856	749	2,968	5.3	376	142	103	622
59.9	37.1	40.3	46.1	141	65	79	285	8.9	45	21	28	94
77.9	57.1	51.9	62.5	3,280	2,358	2,268	7,906	5.9	1,208	858	892	2,958
69.8	36.7	37.5	48.4	583	336	381	1,300	8.5	229	61	90	379
71.3	57.2	62.4	63.8	594	478	609	1,681	4.3	299	138	142	579
81.7	52.4	48.7	61.2	4,094	2,481	2,642	9,217	4.6	1,760	900	926	3,586
78.8	48.6	47.5	58.6	2,693	1,575	1,760	6,028	8.2	1,713	672	692	3,076
78.0	58.3	58.7	65.2	2,497	1,921	2,051	6,469	8.6	1,674	863	897	3,434
85.3	45.8	40.8	57.7	707	401	414	1,522	6.5	341	144	138	623
74.6	53.9	59.2	62.8	253	142	180	575	6.5	100	44	59	203
72.9	39.5	37.4	50.3	860	397	477	1,734	7.1	588	197	304	1,089
84.5	54.0	45.3	61.5	809	530	554	1,893	9.0	417	189	145	751
59.8	37.6	36.5	45.1	758	447	513	1,718	5.9	313	132	150	594
77.0	41.2	38.0	52.4	944	643	703	2,290	7.9	638	275	282	1,195
84.3	64.8	56.7	68.7	14,197	10,421	10,448	35,066	6.6	8,396	4,781	4,403	17,579
74.0	44.3	42.6	53.9	637	411	462	1,510	7.5	359	152	153	664
71.9	50.1	50.2	57.6	380	217	242	839	5.3	151	72	70	293
80.6	56.6	51.9	63.3	29,423	20,064	21,055	70,542	6.7	16,749	8,556	8,361	33,666
82.8	46.9	42.2	57.6	3,129	1,780	2,018	6,927	8.5	1,698	445	426	2,569
76.1	44.8	41.3	54.4	5,275	3,581	3,808	12,664	6.5	2,854	1,044	970	4,868
74.9	44.9	41.6	54.1	7,938	6,121	6,629	20,688	5.5	5,214	2,190	2,127	9,532
77.0	45.3	41.6	55.0	16,342	11,482	12,455	40,279	6.3	9,766	3,679	3,523	16,969
87.0	69.1	64.4	73.7	754	583	647	1,984	5.3	392	293	230	915
79.2	52.2	48.0	60.0	47,102	32,465	34,538	114,105	6.6	27,136	12,590	12,204	51,930
62.0	30.5	40.3	44.7	226	117	143	486	6.5	105	39	54	199
30.7	6.0	7.6	15.1	241	59	104	404	5.3	93	12	19	124
65.3	41.0	38.7	48.6	1,611	1,161	1,353	4,125	5.4	476	215	243	935
85.8	34.9	45.2	56.0	99	54	58	211	5.3	21	7	9	37
58.5	32.6	32.7	41.5	2,177	1,391	1,658	5,226	5.5	695	273	325	1,294
62.0	32.8	37.9	44.6	261	213	298	772	3.6	85	37	51	173
72.6	34.7	36.5	48.4	701	422	496	1,619	2.7	126	38	50	214
73.7	59.7	61.8	65.5	324	183	197	704	5.6	86	42	47	176
56.8	42.8	39.6	46.5	489	380	419	1,288	3.3	140	81	73	294
63.7	49.3	48.2	54.0	813	563	616	1,992	4.1	226	124	120	471
44.6	13.7	15.1	24.8	415	193	210	818	3.4	102	27	30	158
89.8	85.5	81.1	85.5	288	211	255	754	5.5	75	58	61	194
82.1	52.9	47.4	61.1	183	101	107	391	5.2	67	44	42	152
62.3	38.4	37.2	46.2	886	505	572	1,963	4.6	243	129	132	504
45.5	20.2	20.4	29.3	317	120	175	612	3.1	55	15	22	92
58.0	34.2	32.9	42.0	1,203	625	747	2,575	4.2	298	144	155	596
57.1	47.9	54.1	53.2	3,060	2,458	3,036	8,554	4.2	812	597	727	2,136
45.9	32.0	34.1	37.5	892	527	593	2,012	6.0	387	252	265	903
45.5	30.4	32.1	36.2	1,061	766	869	2,696	5.1	555	338	389	1,281
37.1	11.6	9.9	19.8	236	76	75	387	3.4	59	20	19	99
50.6	38.1	41.8	43.7	5,249	3,827	4,573	13,649	4.6	1,813	1,207	1,399	4,419
32.2	33.7	43.7	36.6	266	299	356	921	2.3	27	18	27	73
74.9	49.8	46.6	57.3	61,052	42,163	45,550	148,765	6.2	31,615	15,288	15,224	62,127

TABLE 10 — CARAVAN PARKS BY STATISTICAL DIVISION, QUEENSLAND

Particulars	Brisbane (SD)			Moreton (SD)			Wide Bay-Burnett (SD)		
	Short-term	Long-term	Total	Short-term	Long-term	Total	Short-term	Long-term	Total
ESTABLISHMENTS, CAPACITY AND EMPLOYMENT									
<i>March quarter 1994</i>									
Establishments	8	68	76	34	78	112	36	59	95
Capacity									
On-site vans	42	1,355	1,397	99	1,045	1,144	173	510	683
Other powered sites	259	5,040	5,299	3,189	5,040	8,229	2,304	2,527	4,831
Unpowered sites	902	430	1,332	2,078	1,082	3,160	1,266	706	1,972
Cabins, flats, etc.	28	542	570	211	562	773	200	267	467
<i>Total capacity</i>	<i>1,231</i>	<i>7,367</i>	<i>8,598</i>	<i>5,577</i>	<i>7,729</i>	<i>13,306</i>	<i>3,943</i>	<i>4,010</i>	<i>7,953</i>
Sites occupied by long-term guests	94	5,036	5,130	469	3,844	4,313	359	1,278	1,637
Other sites permanently reserved	176	63	239	289	237	526	126	72	198
Employment (persons)	21	350	371	172	330	502	105	186	291
<i>March quarter 1995...</i>									
Establishments	8	67	75	35	72	107	37	58	95
Capacity									
On-site vans	43	1,345	1,388	97	971	1,068	186	490	676
Other powered sites	279	5,088	5,367	3,052	4,923	7,975	2,174	2,583	4,757
Unpowered sites	819	320	1,139	2,168	871	3,039	1,163	902	2,065
Cabins, flats, etc.	28	613	641	229	556	785	206	244	450
<i>Total capacity</i>	<i>1,169</i>	<i>7,366</i>	<i>8,535</i>	<i>5,546</i>	<i>7,321</i>	<i>12,867</i>	<i>3,729</i>	<i>4,219</i>	<i>7,948</i>
Sites occupied by long-term guests	99	4,874	4,973	492	3,821	4,313	356	1,227	1,583
Other sites permanently reserved	189	88	277	230	256	486	143	62	205
Employment (persons)	23	341	364	189	302	491	132	182	314
SITE NIGHTS OCCUPIED									
<i>March quarter 1994</i>	<i>39,046</i>	<i>496,044</i>	<i>535,090</i>	<i>195,761</i>	<i>450,481</i>	<i>646,242</i>	<i>107,378</i>	<i>155,971</i>	<i>263,349</i>
<i>1995</i>									
January	18,489	170,775	189,264	97,478	157,499	254,977	42,543	54,062	96,605
February	10,764	154,756	165,520	46,471	131,630	178,101	26,532	43,805	70,337
March	11,983	168,774	180,757	51,865	144,594	196,459	30,273	48,626	78,899
<i>March quarter 1995</i>	<i>41,236</i>	<i>494,305</i>	<i>535,541</i>	<i>195,814</i>	<i>433,723</i>	<i>629,537</i>	<i>99,348</i>	<i>146,493</i>	<i>245,841</i>
SITE OCCUPANCY RATES (per cent)									
<i>March quarter 1994</i>	<i>37.1</i>	<i>74.8</i>	<i>69.7</i>	<i>39.0</i>	<i>64.8</i>	<i>54.0</i>	<i>30.3</i>	<i>43.2</i>	<i>36.8</i>
<i>1995</i>									
January	51.0	74.8	71.5	56.7	69.4	63.9	36.8	41.3	39.2
February	32.9	75.0	69.3	29.9	64.2	49.4	25.4	37.1	31.6
March	33.1	75.0	69.2	30.2	63.7	49.3	26.2	37.2	32.0
<i>March quarter 1995</i>	<i>39.2</i>	<i>74.9</i>	<i>70.0</i>	<i>39.2</i>	<i>65.8</i>	<i>54.4</i>	<i>29.6</i>	<i>38.6</i>	<i>34.4</i>
TAKINGS FROM ACCOMMODATION (\$'000)									
<i>March quarter 1994</i>	<i>329</i>	<i>4,582</i>	<i>4,912</i>	<i>2,423</i>	<i>4,700</i>	<i>7,122</i>	<i>1,127</i>	<i>1,314</i>	<i>2,440</i>
<i>1995...</i>									
January	171	1,530	1,701	1,381	1,851	3,232	541	527	1,068
February	82	1,424	1,506	530	1,376	1,906	269	384	653
March	103	1,594	1,697	646	1,566	2,211	313	429	741
<i>March quarter 1995</i>	<i>357</i>	<i>4,548</i>	<i>4,905</i>	<i>2,556</i>	<i>4,793</i>	<i>7,349</i>	<i>1,122</i>	<i>1,340</i>	<i>2,463</i>

TABLE 10 — CARAVAN PARKS BY STATISTICAL DIVISION, QUEENSLAND *continued*

Particulars	Darling Downs (SD)			South-West (SD)			Fitzroy (SD)		
	Short-term	Long-term	Total	Short-term	Long-term	Total	Short-term	Long-term	Total
ESTABLISHMENTS, CAPACITY AND EMPLOYMENT									
<i>March quarter 1994</i>									
Establishments	13	31	44	7	10	17	34	37	71
Capacity									
On-site vans	73	253	326	29	62	91	121	479	600
Other powered sites	316	911	1,227	115	234	349	1,080	1,961	3,041
Unpowered sites	404	427	831	197	78	275	772	368	1,140
Cabins, flats, etc.	48	89	137	2	17	19	146	243	389
<i>Total capacity</i>	<i>841</i>	<i>1,680</i>	<i>2,521</i>	<i>343</i>	<i>391</i>	<i>734</i>	<i>2,119</i>	<i>3,051</i>	<i>5,170</i>
Sites occupied by long-term guests	63	423	486	12	96	108	201	1,104	1,305
Other sites permanently reserved	2	12	14	1	7	8	28	24	52
Employment (persons)	29	73	102	15	13	28	113	149	262
<i>March quarter 1995</i>									
Establishments	13	30	43	6	12	18	32	40	72
Capacity									
On-site vans	105	249	354	27	62	89	104	516	620
Other powered sites	353	874	1,227	102	270	372	1,046	1,979	3,025
Unpowered sites	434	377	811	172	79	251	588	393	981
Cabins, flats, etc.	75	72	147	2	22	24	140	245	385
<i>Total capacity</i>	<i>967</i>	<i>1,522</i>	<i>2,539</i>	<i>303</i>	<i>433</i>	<i>736</i>	<i>1,878</i>	<i>3,133</i>	<i>5,011</i>
Sites occupied by long-term guests	74	376	450	8	84	92	165	989	1,154
Other sites permanently reserved	4	10	14		2	2	36	38	74
Employment (persons)	35	65	100	11	23	34	101	152	253
SITE NIGHTS OCCUPIED									
<i>March quarter 1994</i>	<i>18,221</i>	<i>49,948</i>	<i>68,169</i>	<i>2,173</i>	<i>11,212</i>	<i>13,385</i>	<i>43,149</i>	<i>122,777</i>	<i>165,926</i>
<i>1995</i>									
January	6,788	14,734	21,522	474	3,477	3,951	15,887	38,279	54,166
February	5,979	14,001	19,980	396	3,011	3,407	10,985	34,220	45,205
March	6,870	14,520	21,390	592	3,583	4,175	12,782	37,879	50,661
<i>March quarter 1995</i>	<i>19,637</i>	<i>43,255</i>	<i>62,892</i>	<i>1,462</i>	<i>10,071</i>	<i>11,533</i>	<i>39,654</i>	<i>110,378</i>	<i>150,032</i>
SITE OCCUPANCY RATES (per cent)									
<i>March quarter 1994</i>	<i>24.1</i>	<i>33.0</i>	<i>30.0</i>	<i>7.0</i>	<i>31.9</i>	<i>20.3</i>	<i>22.6</i>	<i>44.7</i>	<i>35.7</i>
<i>1995—</i>									
January	22.6	30.2	27.3	5.0	25.9	17.3	27.3	39.4	34.9
February	22.1	31.8	28.1	4.7	24.8	16.5	20.9	39.0	32.2
March	22.9	29.8	27.2	6.3	27.7	18.7	22.0	39.0	32.6
<i>March quarter 1995</i>	<i>22.6</i>	<i>30.6</i>	<i>27.5</i>	<i>5.4</i>	<i>26.2</i>	<i>17.5</i>	<i>23.5</i>	<i>39.1</i>	<i>33.3</i>
TAKINGS FROM ACCOMMODATION (\$'000)									
<i>March quarter 1994</i>	<i>183</i>	<i>449</i>	<i>632</i>	<i>21</i>	<i>95</i>	<i>116</i>	<i>486</i>	<i>1,206</i>	<i>1,691</i>
<i>1995—</i>									
January	86	129	215	7	33	40	199	374	573
February	75	119	195	5	26	32	119	351	470
March	84	120	204	7	33	40	140	381	520
<i>March quarter 1995</i>	<i>245</i>	<i>369</i>	<i>613</i>	<i>20</i>	<i>92</i>	<i>112</i>	<i>458</i>	<i>1,105</i>	<i>1,563</i>

TABLE 10 — CARAVAN PARKS BY STATISTICAL DIVISION, QUEENSLAND —continued

Particulars	Central-West (SD)			Mackay (SD)			Northern (SD)		
	Short-term	Long-term	Total	Short-term	Long-term	Total	Short-term	Long-term	Total
ESTABLISHMENTS, CAPACITY AND EMPLOYMENT									
<i>March quarter 1994—</i>									
Establishments	10	—	10	17	28	45	15	29	44
Capacity									
On-site vans	50	—	50	118	241	359	123	257	380
Other powered sites	322	—	322	506	1,677	2,183	624	1,484	2,108
Unpowered sites	371	—	371	244	442	686	251	513	764
Cabins, flats, etc.	41	—	41	137	118	255	81	129	210
<i>Total capacity</i>	<i>784</i>	<i>—</i>	<i>784</i>	<i>1,005</i>	<i>2,478</i>	<i>3,483</i>	<i>1,079</i>	<i>2,383</i>	<i>3,462</i>
Sites occupied by long-term guests	20	—	20	77	714	791	119	802	921
Other sites permanently reserved	2	—	2	8	5	13	8	18	26
Employment (persons)	22	—	22	59	82	141	61	96	157
<i>March quarter 1995—</i>									
Establishments	10	—	10	18	29	47	13	30	43
Capacity									
On-site vans	48	—	48	114	271	385	105	224	329
Other powered sites	323	—	323	611	1,662	2,273	593	1,561	2,154
Unpowered sites	291	—	291	255	414	669	149	549	698
Cabins, flats, etc.	51	—	51	143	165	308	38	197	235
<i>Total capacity</i>	<i>713</i>	<i>—</i>	<i>713</i>	<i>1,123</i>	<i>2,512</i>	<i>3,635</i>	<i>885</i>	<i>2,531</i>	<i>3,416</i>
Sites occupied by long-term guests	17	—	17	60	710	770	89	839	928
Other sites permanently reserved	4	—	4	77	10	87	16	8	24
Employment (persons)	24	—	24	74	88	162	52	105	157
SITE NIGHTS OCCUPIED									
<i>March quarter 1994</i>	<i>4,163</i>	<i>—</i>	<i>4,163</i>	<i>24,746</i>	<i>79,578</i>	<i>104,324</i>	<i>22,430</i>	<i>85,072</i>	<i>107,502</i>
<i>1995</i>									
January	1,336	—	1,336	11,083	26,843	37,926	7,594	31,193	38,787
February	1,129	—	1,129	7,785	23,539	31,324	5,295	28,573	33,868
March	1,709	—	1,709	9,388	25,985	35,373	6,516	31,872	38,388
<i>March quarter 1995</i>	<i>4,174</i>	<i>—</i>	<i>4,174</i>	<i>28,256</i>	<i>76,367</i>	<i>104,623</i>	<i>19,405</i>	<i>91,638</i>	<i>111,043</i>
SITE OCCUPANCY RATES (per cent)									
March quarter 1994	5.9	—	5.9	27.4	35.7	33.3	23.1	39.7	34.5
<i>1995</i>									
January	6.0	—	6.0	31.8	34.5	33.7	27.7	39.8	36.6
February	5.7	—	5.7	24.8	33.5	30.8	21.4	40.3	35.4
March	7.7	—	7.7	27.0	33.4	31.4	23.8	40.6	36.3
March quarter 1995	6.5	—	6.5	28.0	33.8	32.0	24.4	40.2	36.1
TAKINGS FROM ACCOMMODATION (\$'000)									
<i>March quarter 1994</i>	<i>71</i>	<i>—</i>	<i>71</i>	<i>409</i>	<i>676</i>	<i>1,086</i>	<i>299</i>	<i>856</i>	<i>1,155</i>
<i>1995—</i>									
January	25	—	25	187	256	443	99	332	431
February	18	—	18	121	218	339	66	308	374
March	26	—	26	154	243	397	82	334	415
<i>March quarter 1995</i>	<i>69</i>	<i>—</i>	<i>69</i>	<i>462</i>	<i>717</i>	<i>1,179</i>	<i>247</i>	<i>973</i>	<i>1,219</i>

TABLE 10 — CARAVAN PARKS BY STATISTICAL DIVISION, QUEENSLAND *continued*

Particulars	Far North (SD)			North-West (SD)			Queensland		
	Short-term	Long-term	Total	Short-term	Long-term	Total	Short-term	Long-term	Total
ESTABLISHMENTS, CAPACITY AND EMPLOYMENT									
<i>March quarter 1994</i>									
Establishments	46	46	92	12	11	23	232	397	629
Capacity									
On-site vans	207	487	694	27	74	101	1,062	4,763	5,825
Other powered sites	1,737	1,907	3,644	379	643	1,022	10,831	21,424	32,255
Unpowered sites	1,486	883	2,369	290	233	523	8,261	5,162	13,423
Cabins, flats, etc.	309	323	632	40	18	58	1,243	2,308	3,551
<i>Total capacity</i>	<i>3,739</i>	<i>3,600</i>	<i>7,339</i>	<i>736</i>	<i>968</i>	<i>1,704</i>	<i>21,397</i>	<i>33,657</i>	<i>55,054</i>
Sites occupied by long-term guests	326	1,045	1,371	29	317	346	1,769	14,659	16,428
Other sites permanently reserved	30	59	89	5		5	675	497	1,172
Employment (persons)	170	155	325	39	24	63	806	1,458	2,264
<i>March quarter 1995</i>									
Establishments	49	44	93	17	9	26	238	391	629
Capacity									
On-site vans	173	549	722	39	63	102	1,041	4,740	5,781
Other powered sites	1,781	1,825	3,606	509	598	1,107	10,823	21,363	32,186
Unpowered sites	1,262	911	2,173	484	114	598	7,785	4,930	12,715
Cabins, flats, etc.	361	309	670	49	16	65	1,322	2,439	3,761
<i>Total capacity</i>	<i>3,577</i>	<i>3,594</i>	<i>7,171</i>	<i>1,081</i>	<i>791</i>	<i>1,872</i>	<i>20,971</i>	<i>33,472</i>	<i>54,443</i>
Sites occupied by long-term guests	345	995	1,340	37	276	313	1,742	14,191	15,933
Other sites permanently reserved	28	50	78	1	—	1	728	524	1,252
Employment (persons)	179	144	323	43	15	58	863	1,417	2,280
SITE NIGHTS OCCUPIED									
<i>March quarter 1994</i>	<i>64,589</i>	<i>124,795</i>	<i>189,384</i>	<i>5,771</i>	<i>31,677</i>	<i>37,448</i>	<i>527,427</i>	<i>1,607,555</i>	<i>2,134,982</i>
1995—									
January	28,440	41,711	70,151	2,180	9,879	12,059	232,292	548,452	780,744
February	19,523	36,568	56,091	2,059	8,580	10,639	136,918	478,683	615,601
March	22,190	39,729	61,919	2,709	9,759	12,468	156,877	525,321	682,198
<i>March quarter 1995</i>	<i>70,153</i>	<i>118,008</i>	<i>188,161</i>	<i>6,948</i>	<i>28,218</i>	<i>35,166</i>	<i>526,087</i>	<i>1,552,456</i>	<i>2,078,543</i>
SITE OCCUPANCY RATES (per cent)									
March quarter 1994	19.2	38.5	28.7	8.7	36.4	24.4	27.5	53.1	43.1
1995									
January	25.6	37.4	31.6	6.5	40.3	20.8	35.7	52.9	46.3
February	19.5	37.6	28.4	6.8	38.7	20.3	23.3	51.3	40.5
March	20.0	36.8	28.3	8.1	39.8	21.5	24.1	51.0	40.6
March quarter 1995	21.8	37.3	29.5	7.1	39.6	20.9	27.9	51.7	42.5
TAKINGS FROM ACCOMMODATION (\$'000)									
<i>March quarter 1994</i>	<i>869</i>	<i>1,397</i>	<i>2,265</i>	<i>68</i>	<i>319</i>	<i>387</i>	<i>6,285</i>	<i>15,594</i>	<i>21,878</i>
1995									
January	458	499	957	27	104	132	3,181	5,636	8,817
February	270	446	716	26	88	114	1,581	4,741	6,322
March	315	493	808	33	97	130	1,903	5,288	7,191
<i>March quarter 1995</i>	<i>1,043</i>	<i>1,438</i>	<i>2,481</i>	<i>87</i>	<i>289</i>	<i>376</i>	<i>6,666</i>	<i>15,665</i>	<i>22,331</i>

TABLE 11 — CARAVAN PARKS: STATISTICAL DIVISIONS AND SELECTED SUBDIVISIONS

Statistical Divisions and Selected Subdivisions and Statistical Local Areas	Capacity					Total	Sites occupied by long-term guests	Other sites permanently reserved	Employment (persons)
	Establishments	On-site vans	Other powered sites	Unpowered sites	Cabins, flats, etc.				
Albert (S) Part A	4	28	353	30	16	427	257	---	18
Brisbane City (SSD)									
Aspley	3	83	406	2	81	572	392	.	26
Eight Mile Plains	4	221	409	35	61	726	425	15	28
Balance	7	333	1,854	37	104	2,328	1,516	3	133
Total	24	637	2,669	74	246	3,626	2,333	18	187
Caboolture (S) — Part A	5	155	334	23	20	532	349	---	15
Ipswich (C)	4	127	257		45	429	293	---	21
Logan City (SSD)	12	260	677	70	151	1,158	832	5	48
Redcliffe City (SSD)	10	67	315	32	25	439	276	6	35
Redland Shire (SSD)	12	72	480	890	48	1,490	310	219	28
Balance	4	42	282	20	90	434	323	29	12
<i>Brisbane (SD)</i>	<i>75</i>	<i>1,388</i>	<i>5,367</i>	<i>1,139</i>	<i>641</i>	<i>8,535</i>	<i>4,973</i>	<i>277</i>	<i>364</i>
Albert (S) — Part B	9	204	818	88	22	1,132	738	15	41
Boonah (S)	4	7	134	459		600	9	---	6
Caboolture (S) Part B	8	50	855	57	39	1,001	492	141	40
Caloundra (C) — Parts A and B	16	103	872	286	133	1,394	516	96	56
Esk (S)	4	30	134	150	8	322	43	8	7
Gold Coast City (SSD)									
Labrador	4	65	374	201	59	699	252	---	28
Balance	15	175	2,215	193	145	2,728	1,076	97	90
Total	19	240	2,589	394	204	3,427	1,328	97	118
Maroochy (S) Parts A and B	25	216	1,776	465	204	2,661	780	117	109
Noosa (S) — Parts A and B	11	58	432	954	76	1,520	115	12	72
Balance	11	160	365	186	99	810	292	.	42
<i>Moreton (SD)</i>	<i>107</i>	<i>1,068</i>	<i>7,975</i>	<i>3,039</i>	<i>785</i>	<i>12,867</i>	<i>4,313</i>	<i>486</i>	<i>491</i>
Bundaberg (C)	7	93	437	15	117	662	283	2	27
Burnett (S) — Parts A and B	10	61	676	502	30	1,269	224	11	31
Cooloola (S)	10	88	594	354	50	1,086	152	53	40
Hervey Bay (C)	25	176	1,738	350	115	2,379	566	40	91
Isis (S)	3	32	142	14	18	206	44	6	15
Maryborough (C)	9	47	286	171	41	545	158	20	18
Miriam Vale (S)	6	25	216	86	30	357	26	52	25
Nanango (S)	5	60	164	24	11	259	44	5	10
Balance	20	94	504	549	38	1,185	86	16	57
<i>Wide Bay-Burnett (SD)</i>	<i>95</i>	<i>676</i>	<i>4,757</i>	<i>2,065</i>	<i>450</i>	<i>7,948</i>	<i>1,583</i>	<i>205</i>	<i>314</i>
Goondiwindi (T)	3	24	90	20	32	166	41		6
Inglewood (S)	5	17	106	25	8	156	13		7
Murilla (S)	4	19	84	57	5	165	17		7
Toowoomba (C)	5	64	259	40	26	389	182		25
Warwick (S)	5	44	125	164	30	363	26	3	12
Balance	21	186	563	505	46	1,300	171	11	43
<i>Darling Downs (SD)</i>	<i>43</i>	<i>354</i>	<i>1,227</i>	<i>811</i>	<i>147</i>	<i>2,539</i>	<i>450</i>	<i>14</i>	<i>100</i>
<i>South-West (SD)</i>	<i>18</i>	<i>89</i>	<i>372</i>	<i>251</i>	<i>24</i>	<i>736</i>	<i>92</i>	<i>2</i>	<i>34</i>

AND STATISTICAL LOCAL AREAS, QUEENSLAND, MARCH QUARTER 1995

<i>Site nights occupied</i>				<i>Site occupancy rates (per cent)</i>				<i>Takings from accommodation (\$ '000)</i>			
<i>Jan.</i>	<i>Feb.</i>	<i>Mar.</i>	<i>Mar. qtr</i>	<i>Jan.</i>	<i>Feb.</i>	<i>Mar.</i>	<i>Mar. qtr</i>	<i>Jan.</i>	<i>Feb.</i>	<i>Mar.</i>	<i>Mar. qtr</i>
8,780	7,868	8,702	25,350	66.3	65.8	65.7	66.0	66	64	68	197
13,569	11,901	13,431	38,901	76.5	74.3	75.7	75.6	147	126	156	429
16,699	14,827	16,150	47,676	74.2	72.9	71.8	73.0	177	165	179	521
54,041	49,558	53,102	156,701	74.9	76.0	77.0	75.9	487	462	518	1,467
84,309	76,286	82,683	243,278	75.0	75.1	75.7	75.3	811	753	852	2,416
12,478	10,962	12,033	35,473	75.7	73.6	73.0	74.1	116	106	121	344
10,299	9,578	10,259	30,136	77.4	79.7	77.1	78.1	84	82	87	254
27,954	24,893	27,718	80,565	77.9	76.8	77.2	77.3	230	207	237	674
10,304	9,505	10,232	30,041	75.7	77.3	75.2	76.0	92	86	93	271
24,194	16,281	17,981	58,456	52.4	39.0	38.9	43.6	205	119	139	463
10,946	10,147	11,149	32,242	81.4	83.5	82.9	82.5	97	90	100	286
189,264	165,520	180,757	535,541	71.5	69.3	69.2	70.0	1,701	1,506	1,697	4,905
26,335	23,303	25,453	75,091	75.0	73.5	72.5	73.7	321	250	281	853
3,094	2,728	3,049	8,871	16.6	16.2	16.4	16.4	7	3	6	16
24,431	19,537	20,951	64,919	78.7	69.7	67.5	72.1	251	173	192	616
31,777	21,572	23,327	76,676	73.5	55.3	54.0	61.1	395	215	246	857
1,692	1,523	1,722	4,937	17.0	16.9	17.3	17.0	15	13	15	43
13,781	10,543	11,029	35,353	63.6	53.9	50.9	56.2	233	128	144	505
64,582	43,371	49,653	157,606	76.4	56.8	58.7	64.2	959	520	577	2,056
78,363	53,914	60,682	192,959	73.8	56.2	57.1	62.6	1,192	648	721	2,560
61,784	37,873	41,409	141,066	74.9	50.8	50.2	58.9	704	400	519	1,622
17,943	8,402	9,554	35,899	38.1	19.7	20.3	26.2	248	110	119	477
9,558	9,249	10,312	29,119	38.1	40.8	41.1	39.9	98	94	112	305
254,977	178,101	196,459	629,537	63.9	49.4	49.3	54.4	3,232	1,906	2,211	7,349
11,623	10,630	11,638	33,891	56.6	57.3	56.7	56.9	121	102	115	339
15,812	11,397	12,505	39,714	40.2	32.1	31.8	34.8	146	84	94	325
11,380	8,401	9,977	29,758	33.8	27.6	29.6	30.4	140	84	94	318
35,048	23,028	25,467	83,543	47.5	34.6	34.5	39.0	432	227	272	931
3,459	2,066	2,340	7,865	54.2	35.8	36.6	42.4	40	23	24	88
6,718	5,547	6,167	18,432	39.8	36.3	36.5	37.6	52	42	48	142
5,889	3,227	3,425	12,541	53.2	32.3	30.9	39.0	69	34	23	126
1,680	1,653	1,991	5,324	20.9	22.8	24.8	22.8	11	14	15	40
4,996	4,388	5,389	14,773	13.6	13.2	14.7	13.9	57	42	56	155
96,605	70,337	78,899	245,841	39.2	31.6	32.0	34.4	1,068	653	741	2,463
1,863	1,583	1,854	5,300	36.2	34.1	36.0	35.5	21	19	20	60
520	463	524	1,507	10.8	10.6	10.8	10.7	4	3	4	11
877	754	741	2,372	17.1	16.3	14.5	16.0	9	7	7	23
7,415	6,741	7,014	21,170	61.5	61.9	58.2	60.5	75	64	69	207
2,046	1,197	1,380	4,623	18.2	11.8	12.3	14.2	21	14	15	50
8,801	9,242	9,877	27,920	21.8	25.4	24.5	23.9	84	88	89	261
21,522	19,980	21,390	62,892	27.3	28.1	27.2	27.5	215	195	204	613
3,951	3,407	4,175	11,533	17.3	16.5	18.7	17.5	40	32	40	112

TABLE 11 — CARAVAN PARKS: STATISTICAL DIVISIONS AND SELECTED SUBDIVISIONS

Statistical Divisions and Selected Subdivisions and Statistical Local Areas	Capacity					Total	Sites occupied by long-term guests	Other sites permanently reserved	Employment (persons)
	Establishments	On-site vans	Other powered sites	Unpowered sites	Cabins, flats, etc.				
Banana (S)	8	99	246	94	17	456	66	—	24
Calliope (S) — Parts A and B	9	69	504	161	28	762	192	8	30
Emerald (S)	15	108	510	140	79	837	181	7	54
Gladstone (C)	7	79	279	49	41	448	215	2	22
Livingstone (S)	11	48	480	279	66	873	160	38	38
Rockhampton (C)	7	108	540	105	134	887	205	13	50
Balance	15	109	466	153	20	748	135	6	35
<i>Fitzroy (SD)</i>	72	620	3,025	981	385	5,011	1,154	74	253
<i>Central-West (SD)</i>	10	48	323	291	51	713	17	4	24
Belyando (S)	4	10	352	39	12	413	137	—	8
Broadsound (S)	3	8	177	36	11	232	24	7	5
Mirani (S)	4	18	108	42	4	172	34	1	9
Mackay (C) — Parts A and B	16	174	914	222	147	1,457	373	5	62
Sarina (S)	7	69	129	48	17	263	88	7	15
Whitsunday (S)	13	106	593	282	117	1,098	114	67	63
<i>Mackay (SD)</i>	47	385	2,273	669	308	3,635	770	87	162
Bowen (S)	11	125	531	148	12	816	155	2	32
Burdekin (S)	7	30	240	125	32	427	103	4	16
Dalrymple (S)	5	11	102	34	25	172	4	—	13
Hinchinbrook (S)	5	19	262	80	20	381	33	17	20
Townsville (C)	10	120	774	197	105	1,196	479	1	56
Balance	5	24	245	114	41	424	154	—	20
<i>Northern (SD)</i>	43	329	2,154	698	235	3,416	928	24	157
Atherton (S)	5	50	217	149	35	451	100	16	12
Cairns (C)	4	60	360	145	101	666	260	—	36
Cardwell (S)	12	100	430	228	79	837	88	11	45
Douglas (S)	11	43	464	237	78	822	87	2	44
Eacham (S)	4	2	90	155	33	280	27	11	12
Etheridge (S)	3	7	69	45	12	133	1	1	6
Herberton (S)	5	21	72	160	18	271	20	—	13
Johnstone (S)	13	93	447	293	48	881	136	3	33
Mareeba (S)	9	77	229	98	40	444	92	3	20
Mulgrave (S) — Parts A and B	19	241	1,001	271	205	1,718	490	29	79
Balance	8	28	227	392	21	668	39	2	23
<i>Far North (SD)</i>	93	722	3,606	2,173	670	7,171	1,340	78	323
Carpentaria (S)	4	10	229	122	26	387	12	1	10
Mount Isa (C)	10	60	598	140	26	824	275	—	18
Balance	12	32	280	336	13	661	26	—	30
<i>North-West (SD)</i>	26	102	1,107	598	65	1,872	313	1	58
<i>Queensland</i>									
Short-term parks	238	1,041	10,823	7,785	1,322	20,971	1,742	728	863
Long-term parks	391	4,740	21,363	4,930	2,439	33,472	14,191	524	1,417
Total	629	5,781	32,186	12,715	3,761	54,443	15,933	1,252	2,280
Albert (S) (a)	13	232	1,171	118	38	1,559	995	15	59
Beaudesert (S) (a)	5	20	157	128	62	367	155	—	25
Caboolture (S) (a)	13	205	1,189	80	59	1,533	841	141	55
Sunshine Coast Statistical District (b)	35	215	2,765	975	305	4,260	1,120	218	180

(a) Albert, Beaudesert and Caboolture Shires straddle the boundary line between Brisbane and Moreton Statistical Divisions. (b) Sunshine Coast Statistical District comprises the more urban coastal portions of Caloundra City and Maroochy and Noosa Shires.

AND STATISTICAL LOCAL AREAS, QUEENSLAND, MARCH QUARTER 1995 *continued*

<i>Site nights occupied</i>				<i>Site occupancy rates (per cent)</i>				<i>Takings from accommodation (\$'000)</i>			
<i>Jan.</i>	<i>Feb.</i>	<i>Mar.</i>	<i>Mar. qtr</i>	<i>Jan.</i>	<i>Feb.</i>	<i>Mar.</i>	<i>Mar. qtr</i>	<i>Jan.</i>	<i>Feb.</i>	<i>Mar.</i>	<i>Mar. qtr</i>
2,256	2,144	2,410	6,810	16.0	16.8	17.0	16.6	21	18	20	59
7,127	5,900	6,937	19,964	30.2	27.7	29.4	29.1	76	65	78	219
8,628	8,410	9,795	26,833	33.3	35.9	37.8	35.6	85	100	97	282
8,638	7,765	8,511	24,914	62.2	61.9	61.3	61.8	73	69	78	220
12,145	7,609	8,720	28,474	44.9	31.1	32.2	36.2	138	70	83	292
16,650	8,871	9,269	28,790	38.7	35.7	33.7	36.1	141	108	122	371
4,722	4,506	5,019	14,247	20.4	21.5	21.6	21.2	39	38	43	120
<i>54,166</i>	<i>45,205</i>	<i>50,661</i>	<i>150,032</i>	<i>34.9</i>	<i>32.2</i>	<i>32.6</i>	<i>33.3</i>	<i>573</i>	<i>470</i>	<i>520</i>	<i>1,563</i>
<i>1,336</i>	<i>1,129</i>	<i>1,709</i>	<i>4,174</i>	<i>6.0</i>	<i>5.7</i>	<i>7.7</i>	<i>6.5</i>	<i>25</i>	<i>18</i>	<i>26</i>	<i>69</i>
<i>4,296</i>	<i>3,836</i>	<i>4,254</i>	<i>12,386</i>	<i>33.6</i>	<i>33.2</i>	<i>33.2</i>	<i>33.3</i>	<i>25</i>	<i>24</i>	<i>29</i>	<i>78</i>
<i>1,424</i>	<i>1,165</i>	<i>1,289</i>	<i>3,878</i>	<i>19.8</i>	<i>17.9</i>	<i>17.9</i>	<i>18.6</i>	<i>15</i>	<i>12</i>	<i>17</i>	<i>45</i>
<i>1,261</i>	<i>1,078</i>	<i>1,229</i>	<i>3,568</i>	<i>23.6</i>	<i>22.4</i>	<i>23.0</i>	<i>23.0</i>	<i>7</i>	<i>6</i>	<i>8</i>	<i>20</i>
<i>15,986</i>	<i>13,684</i>	<i>15,215</i>	<i>44,885</i>	<i>35.4</i>	<i>33.5</i>	<i>33.7</i>	<i>34.2</i>	<i>185</i>	<i>147</i>	<i>157</i>	<i>489</i>
<i>3,605</i>	<i>3,232</i>	<i>3,723</i>	<i>10,560</i>	<i>44.2</i>	<i>43.9</i>	<i>45.7</i>	<i>44.6</i>	<i>40</i>	<i>37</i>	<i>42</i>	<i>119</i>
<i>11,354</i>	<i>8,329</i>	<i>9,663</i>	<i>29,346</i>	<i>33.4</i>	<i>27.1</i>	<i>28.4</i>	<i>29.7</i>	<i>171</i>	<i>113</i>	<i>144</i>	<i>428</i>
<i>37,926</i>	<i>31,324</i>	<i>35,373</i>	<i>104,623</i>	<i>33.7</i>	<i>30.8</i>	<i>31.4</i>	<i>32.0</i>	<i>443</i>	<i>339</i>	<i>397</i>	<i>1,179</i>
<i>5,891</i>	<i>4,974</i>	<i>5,774</i>	<i>16,639</i>	<i>23.3</i>	<i>21.8</i>	<i>22.8</i>	<i>22.7</i>	<i>61</i>	<i>48</i>	<i>59</i>	<i>168</i>
<i>3,611</i>	<i>3,282</i>	<i>3,845</i>	<i>10,738</i>	<i>27.3</i>	<i>27.5</i>	<i>29.0</i>	<i>27.9</i>	<i>27</i>	<i>28</i>	<i>33</i>	<i>89</i>
<i>604</i>	<i>309</i>	<i>346</i>	<i>1,259</i>	<i>11.3</i>	<i>6.4</i>	<i>6.5</i>	<i>8.1</i>	<i>7</i>	<i>3</i>	<i>4</i>	<i>14</i>
<i>2,462</i>	<i>1,689</i>	<i>1,817</i>	<i>5,968</i>	<i>20.8</i>	<i>15.8</i>	<i>15.4</i>	<i>17.4</i>	<i>25</i>	<i>15</i>	<i>15</i>	<i>56</i>
<i>21,203</i>	<i>19,068</i>	<i>21,297</i>	<i>61,568</i>	<i>57.2</i>	<i>56.9</i>	<i>57.4</i>	<i>57.2</i>	<i>254</i>	<i>227</i>	<i>246</i>	<i>728</i>
<i>5,016</i>	<i>4,546</i>	<i>5,309</i>	<i>14,871</i>	<i>38.2</i>	<i>38.3</i>	<i>40.4</i>	<i>39.0</i>	<i>56</i>	<i>51</i>	<i>58</i>	<i>165</i>
<i>38,787</i>	<i>33,868</i>	<i>38,388</i>	<i>111,043</i>	<i>36.6</i>	<i>35.4</i>	<i>36.3</i>	<i>36.1</i>	<i>431</i>	<i>374</i>	<i>415</i>	<i>1,219</i>
<i>4,822</i>	<i>3,998</i>	<i>4,063</i>	<i>12,883</i>	<i>34.5</i>	<i>31.7</i>	<i>29.1</i>	<i>31.7</i>	<i>50</i>	<i>37</i>	<i>40</i>	<i>128</i>
<i>10,984</i>	<i>9,427</i>	<i>10,314</i>	<i>30,725</i>	<i>53.2</i>	<i>50.6</i>	<i>50.0</i>	<i>51.3</i>	<i>176</i>	<i>152</i>	<i>175</i>	<i>503</i>
<i>5,894</i>	<i>4,201</i>	<i>4,974</i>	<i>15,069</i>	<i>22.7</i>	<i>17.9</i>	<i>19.2</i>	<i>20.0</i>	<i>78</i>	<i>45</i>	<i>62</i>	<i>186</i>
<i>5,551</i>	<i>3,859</i>	<i>4,499</i>	<i>13,909</i>	<i>21.8</i>	<i>19.5</i>	<i>20.6</i>	<i>20.7</i>	<i>88</i>	<i>51</i>	<i>68</i>	<i>207</i>
<i>2,453</i>	<i>1,566</i>	<i>1,714</i>	<i>5,733</i>	<i>28.3</i>	<i>20.0</i>	<i>19.7</i>	<i>22.8</i>	<i>38</i>	<i>17</i>	<i>17</i>	<i>71</i>
<i>172</i>	<i>133</i>	<i>136</i>	<i>441</i>	<i>4.2</i>	<i>3.6</i>	<i>3.3</i>	<i>3.7</i>	<i>1</i>	<i>1</i>	<i>1</i>	<i>4</i>
<i>785</i>	<i>823</i>	<i>1,049</i>	<i>2,657</i>	<i>9.3</i>	<i>10.8</i>	<i>12.5</i>	<i>10.9</i>	<i>6</i>	<i>7</i>	<i>8</i>	<i>22</i>
<i>6,540</i>	<i>4,644</i>	<i>5,687</i>	<i>16,871</i>	<i>23.9</i>	<i>18.8</i>	<i>20.8</i>	<i>21.3</i>	<i>66</i>	<i>52</i>	<i>57</i>	<i>176</i>
<i>4,151</i>	<i>3,860</i>	<i>4,235</i>	<i>12,246</i>	<i>30.2</i>	<i>31.0</i>	<i>30.8</i>	<i>30.6</i>	<i>49</i>	<i>38</i>	<i>46</i>	<i>134</i>
<i>26,268</i>	<i>21,749</i>	<i>23,046</i>	<i>71,063</i>	<i>49.3</i>	<i>45.2</i>	<i>43.3</i>	<i>46.0</i>	<i>376</i>	<i>298</i>	<i>312</i>	<i>987</i>
<i>2,531</i>	<i>1,831</i>	<i>2,202</i>	<i>6,564</i>	<i>12.2</i>	<i>9.8</i>	<i>10.6</i>	<i>10.9</i>	<i>28</i>	<i>18</i>	<i>21</i>	<i>66</i>
<i>70,151</i>	<i>56,091</i>	<i>61,919</i>	<i>188,161</i>	<i>31.6</i>	<i>28.4</i>	<i>28.3</i>	<i>29.5</i>	<i>957</i>	<i>716</i>	<i>808</i>	<i>2,481</i>
<i>1,003</i>	<i>952</i>	<i>1,307</i>	<i>3,262</i>	<i>8.4</i>	<i>8.8</i>	<i>10.9</i>	<i>9.4</i>	<i>10</i>	<i>10</i>	<i>13</i>	<i>33</i>
<i>9,940</i>	<i>8,643</i>	<i>9,859</i>	<i>28,442</i>	<i>38.9</i>	<i>37.5</i>	<i>38.6</i>	<i>38.4</i>	<i>105</i>	<i>90</i>	<i>98</i>	<i>293</i>
<i>1,116</i>	<i>1,044</i>	<i>1,302</i>	<i>3,462</i>	<i>5.4</i>	<i>5.6</i>	<i>6.4</i>	<i>5.8</i>	<i>17</i>	<i>15</i>	<i>19</i>	<i>50</i>
<i>12,059</i>	<i>10,639</i>	<i>12,468</i>	<i>35,166</i>	<i>20.8</i>	<i>20.3</i>	<i>21.5</i>	<i>20.9</i>	<i>132</i>	<i>114</i>	<i>130</i>	<i>376</i>
<i>232,292</i>	<i>136,918</i>	<i>156,877</i>	<i>526,087</i>	<i>35.7</i>	<i>23.3</i>	<i>24.1</i>	<i>27.9</i>	<i>3,181</i>	<i>1,581</i>	<i>1,903</i>	<i>6,666</i>
<i>548,452</i>	<i>478,683</i>	<i>525,321</i>	<i>1,552,456</i>	<i>52.9</i>	<i>51.3</i>	<i>51.0</i>	<i>51.7</i>	<i>5,636</i>	<i>4,741</i>	<i>5,288</i>	<i>15,665</i>
<i>780,744</i>	<i>615,601</i>	<i>682,198</i>	<i>2,078,543</i>	<i>46.3</i>	<i>40.5</i>	<i>40.6</i>	<i>42.5</i>	<i>8,817</i>	<i>6,322</i>	<i>7,191</i>	<i>22,331</i>
<i>35,115</i>	<i>31,171</i>	<i>34,155</i>	<i>100,441</i>	<i>72.7</i>	<i>71.4</i>	<i>70.7</i>	<i>71.6</i>	<i>387</i>	<i>314</i>	<i>349</i>	<i>1,050</i>
<i>5,764</i>	<i>5,067</i>	<i>5,729</i>	<i>16,560</i>	<i>50.7</i>	<i>49.3</i>	<i>50.4</i>	<i>50.1</i>	<i>67</i>	<i>55</i>	<i>62</i>	<i>184</i>
<i>36,909</i>	<i>30,499</i>	<i>32,984</i>	<i>100,392</i>	<i>77.7</i>	<i>71.1</i>	<i>69.4</i>	<i>72.8</i>	<i>367</i>	<i>280</i>	<i>313</i>	<i>960</i>
<i>95,273</i>	<i>56,406</i>	<i>61,996</i>	<i>213,675</i>	<i>72.1</i>	<i>47.3</i>	<i>46.9</i>	<i>55.7</i>	<i>1,169</i>	<i>609</i>	<i>759</i>	<i>2,537</i>

TABLE 12 — VISITOR HOSTELS BY STATISTICAL DIVISION, QUEENSLAND

Particulars	Brisbane (SD)	Moreton (SD)	Wide Bay- Burnett (SD)	Mackay (SD)	Northern (SD)	Far North (SD)	Balance of State	Queensland
ESTABLISHMENTS, CAPACITY AND EMPLOYMENT								
<i>March quarter 1994—</i>								
Establishments	16	18	10	13	18	38	9	122
Bed spaces	776	1,143	537	929	1,272	3,193	383	8,233
Employment (persons)	42	72	29	90	80	218	19	550
<i>March quarter 1995—</i>								
Establishments	15	14	10	12	17	37	9	114
Bed spaces	828	923	558	902	1,260	3,034	371	7,876
Employment (persons)	42	48	37	107	63	272	19	588
GUEST NIGHTS								
<i>March quarter 1994</i>	<i>38,666</i>	<i>58,078</i>	<i>22,514</i>	<i>40,265</i>	<i>38,723</i>	<i>128,934</i>	<i>12,141</i>	<i>339,321</i>
<i>1995—</i>								
January	14,041	21,041	8,798	16,495	11,990	44,182	4,510	121,057
February	12,267	14,045	7,289	13,606	10,776	36,776	3,519	98,278
March	13,463	14,311	7,792	14,512	12,652	41,438	4,038	108,206
<i>March quarter 1995</i>	<i>39,771</i>	<i>49,397</i>	<i>23,879</i>	<i>44,613</i>	<i>35,418</i>	<i>122,396</i>	<i>12,067</i>	<i>327,541</i>
BED OCCUPANCY RATES (per cent)								
<i>March quarter 1994</i>	<i>55.4</i>	<i>56.5</i>	<i>53.9</i>	<i>48.9</i>	<i>33.8</i>	<i>44.9</i>	<i>35.2</i>	<i>46.3</i>
<i>1995—</i>								
January	54.7	73.5	50.9	59.0	30.7	47.0	39.2	49.6
February	52.9	54.3	46.7	53.9	30.5	43.3	33.9	44.6
March	52.5	50.0	45.0	51.9	32.4	44.1	35.1	44.3
<i>March quarter 1995</i>	<i>53.4</i>	<i>59.5</i>	<i>47.5</i>	<i>55.0</i>	<i>31.2</i>	<i>44.8</i>	<i>36.1</i>	<i>46.2</i>
GUEST ARRIVALS								
<i>March quarter 1994</i>	<i>13,035</i>	<i>23,153</i>	<i>9,843</i>	<i>24,000</i>	<i>16,500</i>	<i>41,575</i>	<i>7,681</i>	<i>135,787</i>
<i>1995—</i>								
January	4,765	6,812	3,465	7,508	5,108	15,068	2,609	45,335
February	3,820	5,783	3,229	6,145	4,831	12,536	2,081	38,425
March	4,412	5,635	3,371	6,580	5,411	13,701	2,461	41,571
<i>March quarter 1995</i>	<i>12,997</i>	<i>18,230</i>	<i>10,065</i>	<i>20,233</i>	<i>15,350</i>	<i>41,305</i>	<i>7,151</i>	<i>125,331</i>
AVERAGE LENGTH OF STAY (days)								
<i>March quarter 1994</i>	<i>3.0</i>	<i>2.5</i>	<i>2.3</i>	<i>1.7</i>	<i>2.3</i>	<i>3.1</i>	<i>1.6</i>	<i>2.5</i>
<i>1995—</i>								
January	2.9	3.1	2.5	2.2	2.3	2.9	1.7	2.7
February	3.2	2.4	2.3	2.2	2.2	2.9	1.7	2.6
March	3.1	2.5	2.3	2.2	2.3	3.0	1.6	2.6
<i>March quarter 1995</i>	<i>3.1</i>	<i>2.7</i>	<i>2.4</i>	<i>2.2</i>	<i>2.3</i>	<i>3.0</i>	<i>1.7</i>	<i>2.6</i>
TAKINGS FROM ACCOMMODATION (\$'000)								
<i>March quarter 1994</i>	<i>444</i>	<i>727</i>	<i>224</i>	<i>473</i>	<i>390</i>	<i>1,470</i>	<i>144</i>	<i>3,871</i>
<i>1995</i>								
January	179	259	97	188	137	598	53	1,511
February	156	173	83	161	120	472	42	1,207
March	172	189	87	170	144	515	50	1,326
<i>March quarter 1995</i>	<i>507</i>	<i>620</i>	<i>267</i>	<i>519</i>	<i>402</i>	<i>1,585</i>	<i>145</i>	<i>4,044</i>

EXPLANATORY NOTES

INTRODUCTION

This publication contains data for Queensland from a quarterly survey of tourist accommodation establishments. The period covered by the latest survey is the 3 months ended 31 March 1995.

SCOPE

2 Tourist accommodation establishments currently included in the survey comprise two groups:

- Establishments which provide predominantly short-term accommodation (i.e. for periods of less than 2 months) to the general public. These include:

Hotels, motels and guest houses, with facilities being hotels licensed to operate a public bar and motels, private hotels and guest houses, all of which provide a bath (or shower) and toilet in most guest rooms and have breakfast available for guests.

NOTE: From December quarter 1993, hotel, motel and guest house establishments with fewer than five rooms have been formally excluded from the scope of this statistical collection. This change in scope resulted in the exclusion of 21 establishments which in the September quarter 1993 Survey aggregates represented 1.9 per cent of hotel, motel and guest house establishments but accounted for only 0.2 per cent of accommodation capacity and less than 0.1 percent of occupancy and takings.

Holiday flats, units and houses (excluding establishments predominantly operated on a time share basis) which are operated by owners or managers who have sole letting rights to at least five flats, units or houses or by real estate agents for short-term letting. They are mainly self-contained in terms of cooking, bath (or shower) and toilet facilities and do not have breakfast available for guests. Data for holiday flats, units and houses include short-term owner occupation as well as paying guest occupation.

Visitor hostels which provide accommodation to visitors on a bed basis (rather than by the room). This category does not include establishments providing charity type accommodation (e.g. Salvation Army hostels) nor hotels, motels and guest houses without in-room facilities which provide accommodation on a per room basis.

- *Caravan parks* providing either predominantly short-term (i.e. for periods of less than 2 months) or predominantly long-term (i.e. for periods of 2 months or more) accommodation to the general public and which provide powered sites for caravans and toilet, shower and laundry facilities for guests.

3 Data collected and published for each type of establishment (other than holiday flats, units and houses) include both long-term and short-term guests at these establishments.

4 Establishments providing more than one type of accommodation (e.g. a motel with attached caravan park) are treated as two or more separate establishments. However, self-contained units, flats, cabins, etc. attached to hotels, motels or to caravan parks are included in the capacity for those establishments and not treated as separate holiday flat, unit or house establishments.

DEFINITIONS

5 *Number of establishments.* For hotels, motels and guest houses, caravan parks and visitor hostels, the number of establishments within the scope of the survey which operated for any part of the survey period, or which closed temporarily for the quarter for seasonal reasons.

6 *Number of letting entities.* For holiday flats, units and houses, the number of owners, managers or real estate agents within the scope of the survey who operated for any part of the survey period.

7 *Capacity in terms of Guest rooms, Bed spaces, Holiday units or Caravan park sites, etc.* is the maximum number available to accommodate paying guests during the survey period. Capacity closed temporarily for seasonal reasons is included.

8 *Bed spaces.* Three-quarter beds are counted as one bed space; double beds as two bed spaces. Cots are excluded.

9 *Total caravan park capacity* comprises *On-site vans, Other powered sites, Unpowered sites and Cabins, etc.*

EXPLANATORY NOTES—*continued*

DEFINITIONS —*continued*

10 *Room nights available.* The number of guest rooms available multiplied by the number of days for which they were available during the survey period. Includes operating periods only for establishments closing (other than for seasonal reasons) or opening during the survey period.

11 Occupancy in terms of *Room nights*, *Unit nights* or *Site nights occupied* refers to the total number of nights each guest room, holiday unit or caravan park site, etc. was occupied during the survey period.

NOTE: From September quarter 1992, caravan park sites, etc. permanently reserved for 2 months or more at the end of the survey period but only casually occupied by their tenants have been recorded continuously as *Site nights occupied* irrespective of whether the tenants of individual sites were in residence on any particular night. (See also paragraph 14 below). Previously, usage of these sites was recorded as *Site nights occupied* only when their tenants were in the park. Total site occupancy rates from September quarter 1992 are therefore not comparable with those from previous quarters.

12 Occupancy in terms of *Guest nights* refers to the total number of nights each paying guest stayed during the survey period.

13 *Sites occupied by long-term guests.* The total number of sites, etc. occupied at the end of the survey period by guests who have stayed continuously for 2 months or more.

14 *Other sites permanently reserved.* The total number of powered and unpowered sites, on-site vans and cabins, etc. continuously let for 2 months or more by the end of the survey period to tenants who occupy the sites only on a casual or sporadic basis. Separate data for this item are available only from September quarter 1992.

15 *Occupancy rates* represent occupancy expressed as a percentage of total capacity available during the survey period e.g.

$$\text{Room occupancy rate (\%)} \text{ for the period} = \frac{\text{Room nights occupied}}{(\text{Guest rooms}) \times (\text{No. of days in the period})} \times 100$$

providing that, for establishments closing (other than for seasonal reasons) or opening during the period, the denominator of the above expression includes only operating periods.

16 *Guest arrivals.* The total number of paying guests counted only on the first night they stayed at the accommodation establishment.

17 *Unit lettings.* The total number of times a holiday flat, unit or house was occupied by a new tenant, counted only on the first night it was occupied by the new tenant.

18 *Average length of stay* is expressed in number of days and is calculated:

- for hotels, motels and guest houses and for visitor hostels, by dividing *Guest nights* by *Guest arrivals* and
- for holiday flats, units and houses, by dividing *Unit nights occupied* by *Unit lettings*.

19 *Takings from accommodation.* Revenue received from the provision of accommodation. Takings from meals are excluded. Takings from accommodation for each month generally represent the takings received during that month. Where payments are received in advance of, or after, the provision of accommodation to guests, the monthly figure for takings from accommodation may not necessarily bear a direct relationship to the number of guests accommodated during the month. Rental and storage fees paid to caravan parks for the keeping of private vans in parks are included in the takings of the month they are received.

20 *Star grading.* The grading of hotels and motels with facilities based on the classification system used by members of the Australian Automobile Association (AAA). The gradings are allocated according to a points system based on the amenities and facilities available to guests. Details of the grading scheme are contained in the RACV-RAASA members' publication *Accommodation Australia*, or the individual tour guides produced by members of the AAA. For the purpose of classifying establishments to a star grading in this publication, 'half' star gradings are ignored (e.g. a two and a half star grading has been shown as two star).

EXPLANATORY NOTES -- *continued*

21 *Employment.* The number of persons working at accommodation establishments at the end of the survey period (including working proprietors and those working on other than accommodation activities).

AUSTRALIAN STANDARD
GEOGRAPHICAL
CLASSIFICATION

22 Statistics presented in this publication have been classified according to the Australian Standard Geographical Classification (ASGC), Edition 2.4. This classification incorporates a number of hierarchic structures of geographic areas. The appropriate spatial units of the main structure of the ASGC used in this publication are defined as follows.

Statistical Local Areas (SLAs) are the smallest types of spatial units in the ASGC for which tourist accommodation data are presented. They correspond either to legal local government areas (LGAs) as defined under the *Local Government Act 1936* or to suburbs in certain urban LGAs. Some LGAs are split into two or more parts, with each part forming a separate SLA. In all instances, LGA data can be derived by aggregating SLAs. The unincorporated area of Queensland also forms a SLA. In aggregate, SLAs cover the whole of the State without gaps or overlaps.

Statistical Subdivisions (SSDs) consist of one or more SLAs and form the intermediate size spatial unit for the presentation of regional data.

Statistical Divisions (SDs), which consist of one or more SSDs, are designed to be relatively homogeneous regions characterised by identifiable social and economic units within the region, under the unifying influence of one or more major towns or cities. The Brisbane Statistical Division comprises the Cities of Brisbane, Ipswich, Logan and Redcliffe, the Shires of Pine Rivers and Redland and parts of the Shires of Albert, Beaudesert, Caboolture, and Moreton.

Statistical districts have been defined around selected urban areas to provide comparable statistics over a period of time. These districts, which are intended to contain the anticipated urban spread for at least 20 years, are generally defined as having a population of 25,000 or more and experiencing urban growth beyond the LGA boundaries.

NOTE: In accordance with ASGC Edition 2.4, as applicable from 1 July 1994, recent changes in LGAs in Queensland have been reflected in Tables 7, 9 and 11 in this publication (and in related time series tabulations - see pages 33, 34) as follows:

- amalgamation of Gympie (C) and Widgee (S) to form Cooloola (S);
- transfer of part of Woocoo (S) to Maryborough (C);
- enlargement of Bundaberg (C) by the addition of parts of Gooburrum (S) and Woongarra (S); and amalgamation of the remaining (major) parts of Gooburrum (S) and Woongarra (S) to form Burnett (S);
- amalgamation of Allora (S), Glengallan (S), Rosenthal (S) and Warwick (C) to form Warwick (S);
- enlargement of Mackay (C) by the addition of Pioneer (S);
- boundary changes in Burdekin (S), Dalrymple (S), Hinchinbrook (S), Thuringowa (C) and Townsville (C).

For more detailed information, refer to the ASGC (1216.0).

UNPUBLISHED STATISTICS

23 The ABS may make available on request certain unpublished tourist accommodation statistics. In particular, small geographical area and other tabulations are available for various accommodation types in a time series format. A charge may be made for this information.

RELATED PUBLICATIONS

24 Publications for Australia and each State and Territory are released by the respective offices of the ABS. Tourist accommodation statistics for past quarters are available on request. Other ABS publications which may be of interest include:

Directory of Tourism Statistics (1130.0) (irregular; first and latest issue: 1991)

Overseas Arrivals and Departures, Australia (3401.0) (monthly)

Tourism Indicators Australia (8634.0) (quarterly)

Tourist Accommodation, Australia (8635.0) (quarterly)

25 Current publications produced by the ABS are listed in the *Catalogue of Publications and Products* (1101.0). The ABS also issues the *Release Advice* (1105.0) on Tuesdays and Fridays which lists publications to be released in the next few days. Both the *Catalogue* and *Release Advice* are available from any ABS office.

EXPLANATORY NOTES *-continued*

SYMBOLS AND OTHER USAGES	n.p.	not available for publication but included in totals where applicable
	..	not applicable
		nil or rounded to zero
	(C)	City
	(S)	Shire
	(T)	Town

26 Where figures have been rounded, discrepancies may occur between totals and the sums of the component items.

313 Adelaide Street
BRISBANE Q 4000
5 July 1995

R. A. CROCKETT
Deputy Commonwealth Statistician

TOURIST ACCOMMODATION, QUEENSLAND: TIME SERIES STATISTICS AVAILABLE

Brisbane Statistical Division	HM	HU	CP	VII	Darling Downs Statistical Division	HM	CP		
Albert (S) - Part A (a)			CP		Chinchilla (S)	HM			
Brisbane City (SSD)	IIM	HU	CP		Dalby (T)	HM			
Brisbane City (SSD)	Hotels				Goondiwindi (T)	HM	CP		
Brisbane City (SSD)	Motels				Inglewood (S)	HM	CP		
Ascot	HM				Jondaryan (S)	HM			
Aspley	HM		CP		Murilla (S)	HM	CP		
Brisbane City Core (b)	HM	HU			Stanthorpe (S)	HM	CP		
City - Inner	HM				Taroom (S)	HM			
City - Remainder	HM				Toowoomba (C)	HM	CP		
Kangaroo Point	HM				Warwick (S) (c)	HM	CP		
Spring Hill	HM	HU							
Brisbane City Core (b)					South-West Statistical Division	IIM	CP		
- establishments with more than 50 rooms	HM				Balonne (S)	HM			
Brisbane City Core (b)	Hotels				Murweh (S)	HM	CP		
Brisbane City Core (b)	Motels				Paroo (S)	HM			
Eight Mile Plains			CP		Roma (T)	HM	CP		
Hamilton	HM								
Caboolture (S) - Part A (a)			CP		Fitzroy Statistical Division	IIM	HU	CP	
Ipswich (C)	HM		CP		Banana (S)			CP	
Logan City (SSD)	HM		CP		Banana (S), Fitzroy (S) and Mt Morgan (S)	HM			
Redcliffe City (SSD)	IIM		CP		Bauhinia (S)	HM			
Redland Shire (SSD)	IIM		CP		Calliope (S) - Parts A and B	HM	CP		
North Stradbroke and Coochiemudlo Islands		HU			Duarlinga (S)	HM			
					Emerald (S)	HM	CP		
Moreton Statistical Division	HM	IIM	CP	VII	Gladstone (C)	HM	CP		
Albert (S) Part B (a)			CP		Livingstone (S)	HM	CP		
Boonah (S)	IIM				Rockhampton (C)	HM	CP		
Caboolture (S) - Part B (a)			CP		Rockhampton (C)	Hotels			
Caloundra (C) Parts A and B	HM	HU	CP		Rockhampton (C)	Motels			
Esk (S)	IIM		CP						
Gatton (S)			CP		Central-West Statistical Division	HM	CP		
Gold Coast City (SSD)	HM	IIM	CP	VII	Barcaldine (S)	HM			
Gold Coast City (SSD)	Hotels				Longreach (S)	HM			
Gold Coast City (SSD)	Motels								
Biggera Waters		HU			Mackay Statistical Division	HM	HU	CP	VII
Bilinga	HM				Belyando (S)	HM			
Broadbeach		HU			Broadsound (S)			CP	
Burleigh Heads	HM	HU			Mackay (C) - Parts A and B (c)	HM		CP	
Coolangatta	HM	HU			Mirani (S)			CP	
Coombah			CP		Sarina (S)	IIM		CP	
Currumbin		HU			Whitsunday (S)	HM	HU	CP	VH
Labrador	HM	HU	CP						
Main Beach- Broadwater		HU			Northern Statistical Division	HM	HU	CP	VH
Mermaid Beach	HM	HU			Bowen (S)	HM		CP	
Miami	HM	HU			Burdekin (S) (c)	HM		CP	
Palm Beach	HM	HU			Charters Towers (C)	HM			
Southport	IIM				Dalrymple (S) (c)			CP	
Surfers Paradise	IIM	IIM			Hinchinbrook (S) (c)			CP	
Tugun		HU			Townsville (C) Parts A and B (c)	IIM	HU	CP	
Gold Coast City (SSD) by establishment size					City	HM			
(number of rooms) 1-9, 10-15,					Hermit Park	HM			
16-25, 26-50, 51-100, 101 & over	HM				Magnetic Island		HU		VH
Maroochy (S) - Parts A and B	HM	HU	CP		North Ward Castle Hill	HM	HU		
Noosa (S) Parts A and B	HM	HU	CP		Rosslea	IIM			
Wide Bay-Burnett Statistical Division	HM	HU	CP	VII					
Bundaberg (C) (c)	HM		CP						
Burnett (S) - Parts A and B (c)	HM	HU	CP						
Cooloolta (S) (c)	HM		CP						
Hervey Bay (C)	HM	HU	CP						
Isis (S)	HM		CP						
Kingaroy (S)	HM								
Kolan (S)	HM								
Maryborough (C)	HM		CP						
Miriam Vale (S)	HM		CP						
Nanango (S)	HM		CP						

TOURIST ACCOMMODATION, QUEENSLAND: TIME SERIES STATISTICS AVAILABLE—continued

Far North Statistical Division	HM	HU	CP	VH	Other geographic aggregations		
Atherton (S)	HM				Albert (S) (a)	HM	CP
Atherton (S), Cardwell (S), Douglas (S), Eacham (S), Johnstone (S) and Mulgrave (S)	HM				Beaudesert (S) (a)	HM	CP
Atherton (S) and Eacham (S)	IIM		CP		Caboolture (S) (a)	HM	CP
Atherton (S), Eacham (S), Herberton (S) and Mareeba (S)	Hotels				Sunshine Coast Statistical District (d)	HM	HU CP
Atherton (S), Eacham (S), Herberton (S) and Mareeba (S)	Motels				Sunshine Coast Statistical District (d)	Hotels	
Cairns (C)	HM	HU	CP	VH	Sunshine Coast Statistical District (d)	Motels	
Cairns (C)	Hotels				Great Barrier Reef islands (e)	IIM	
Cairns (C)	Motels				Mackay (C) and Whitsunday (S) (c)	HM	
Cardwell (S)	HM		CP		Balance	IIM	
Douglas (S)	HM	HU	CP	VH	Queensland regions by star grading		
Eacham (S)	IIM				Brisbane City (SSD)		
Etheridge (S)			CP		1-2 and ungraded, 3, 4, 5	HM	
Herberton (S)	HM		CP		Brisbane Statistical Division		
Johnstone (S)	IIM		CP		1-2, 3, 4, 5, Ungraded	HM	
Mareeba (S)	HM		CP		Gold Coast City (SSD)		
Mulgrave (S) - Parts A and B	HM	HU	CP		1, 2, 3, 4, 5, Ungraded	HM	
Mulgrave (S) - Parts A and B	Hotels				Sunshine Coast Statistical District (d)		
Mulgrave (S) - Parts A and B	Motels				1-2, 3, 4-5, Ungraded	IIM	
North-West Statistical Division	HM		CP		Bundaberg (C), Hervey Bay (C), Isis (S), Maryborough (C) and Burnett (S) (c)		
Carpentaria (S)	HM				1, 2, 3, 4, Ungraded	HM	
Cloncurry (S)	HM				Stanthorpe (S), Toowoomba (C) and Warwick (S) (c)		
Flinders (S)	IIM				1-2, 3, 4, Ungraded	HM	
Mount Isa (C)	IIM		CP		Calliope (S) and Gladstone (C)		
					1-2, 3-4 & Ungraded	HM	
Total Queensland	HM	HU	CP	VH	Livingstone (S) and Rockhampton (C)		
By establishment size (number of rooms)					1-2, 3-4 & Ungraded	IIM	
1-9, 10-15, 16-25, 26-50, 51-100, 101 & over	HM				Mackay (C) and Whitsunday (S) (c)		
By star grading					1-2, 3-5, Ungraded	HM	
1, 2, 3, 4, 5, Ungraded	IIM				Townsville (C)		
Total Queensland	Hotels				1-2 and ungraded, 3-5	HM	
Total Queensland	Motels				Atherton (S), Cardwell (S), Douglas (S), Eacham (S), Johnstone (S) and Mulgrave (S)		
					1-2, 3, 4-5, Ungraded	IIM	
					Cairns (C)		
					1-2, 3, 4-5, Ungraded	HM	





NOTE: Establishment type codes are used above to denote the following:
 HM Licensed hotels, motels and guest houses with facilities
 Hotels Licensed hotels with facilities
 Motels Motels and guest houses with facilities
 HU Holiday flats, units and houses
 CP Caravan parks (total short-term and long-term)
 VH Visitor hostels

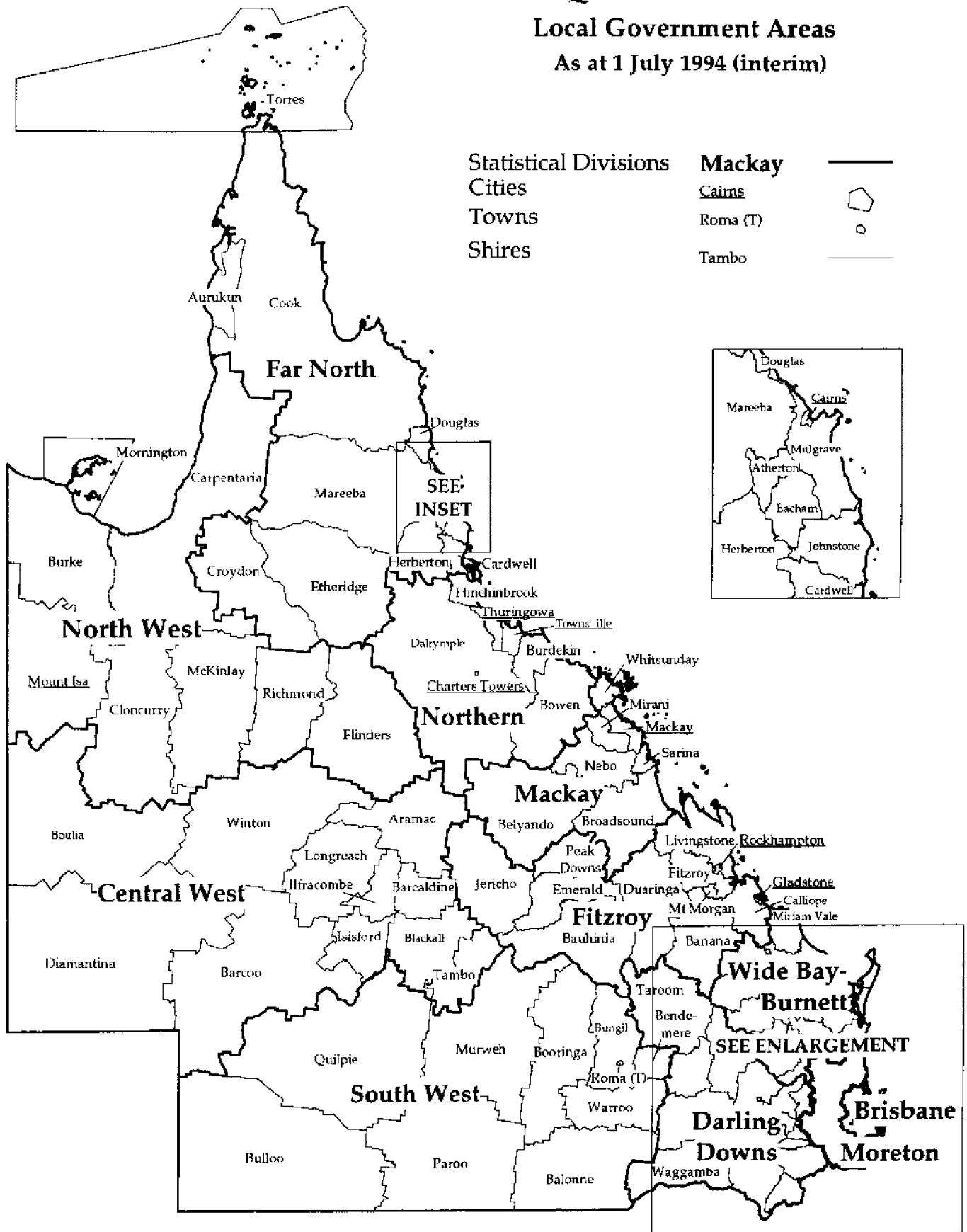
(a) Albert, Beaudesert, Caboolture and Moreton Shires straddle the boundary line between Brisbane and Moreton Statistical Divisions. (b) Brisbane City Core comprises the suburbs of Bowen Hills, City, Dutton Park, Fortitude Valley, Herston, Highgate Hill, Kangaroo Point, Kelvin Grove, Milton, New Farm, Newstead, Paddington, Red Hill, South Brisbane, Spring Hill, West End and Woollongabba. (c) See page 31, Explanatory Note 22 for details of boundary changes effective from 1 July 1994. (d) Sunshine Coast Statistical District comprises the more urban coastal portions of Caloundra City and Maroochy and Noosa Shires. (e) Great Barrier Reef island establishments are those on coastal islands from Lady Elliot in the south to Lizard in the north.

QUEENSLAND

Local Government Areas

As at 1 July 1994 (interim)

Statistical Divisions	Mackay	
Cities	Cairns	
Towns	Roma (T)	
Shires	Tambo	



SOUTH-EASTERN QUEENSLAND

Local Government Areas

As at 1 July 1994 (interim)

Statistical Divisions

Cities

Towns

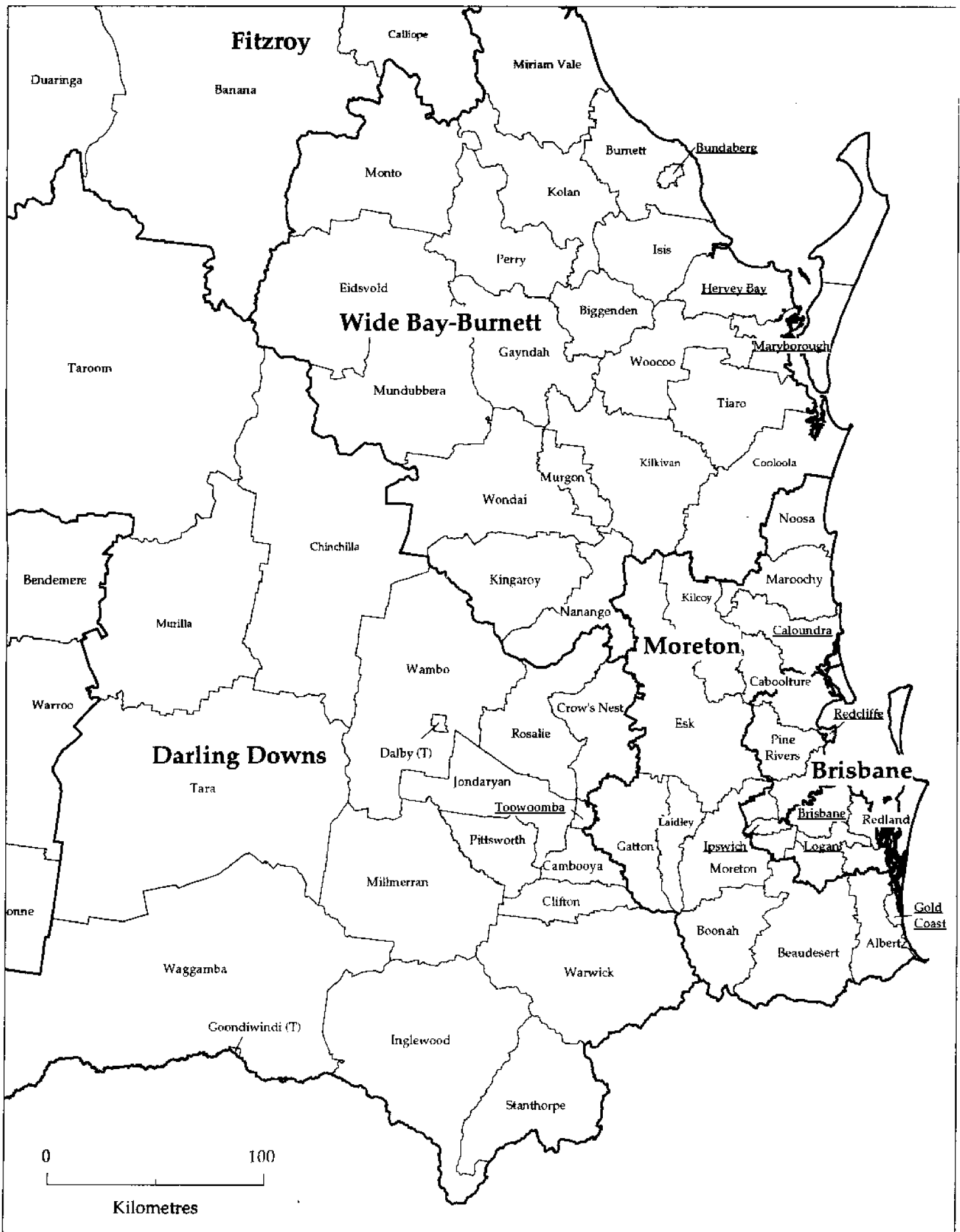
Shires

Moreton ———

Redcliffe ———

Dalby ———

Wondai ———





The ABS publishes a wide range of information on Australia's economic and social conditions. A catalogue of publications and products is available from any of our offices (see below).

INFORMATION CONSULTANCY SERVICES

Special tables or in-depth data investigations are provided by the ABS Information Consultancy Service in each of our offices (see below).

ELECTRONIC DATA SERVICES

A large range of data is available via on-line services, diskette, magnetic tape, tape cartridge and CD ROM. For more details about our electronic data services, contact any ABS office (see below).

BOOKSHOP AND SUBSCRIPTIONS

There is a large number of ABS publications available from the ABS Bookshops in each of our offices. You can also receive any of our publications on a regular basis. Join our subscription mailing service and have your publications mailed to you in Australia at no additional cost. Telephone our Publications Subscription Service toll free Australia wide on 008 0206 08.

ABS EMAIL ADDRESSES

Keylink STAT.INFO/ABS
X.400
(C:AU,A:TELMEMO,O:ABS,SN:INFO,FN:STAT)
Internet STAT.INFO@ABS.
TELEMEMO.AU

GENERAL SALES AND INQUIRIES

• Sydney 02 268 4611 • Adelaide 08 237 7100
• Melbourne 03 615 7000 • Hobart 002 20 5800
• Brisbane 07 222 6351 • Darwin 089 43 2111
• Perth 09 360 5140 • Canberra 06 252 6007

• Information Services, ABS
PO Box 10, Belconnen ACT 2616

